

In-vitro Assessment of Cholinesterase Inhibitory and Antioxidant Activity of  
*Solanum indicum* plant extracts

A research paper is submitted to the Department Of Pharmacy, East West University in  
conformity with the requirements for the degree of Bachelor of Pharmacy

Submitted by

Farjana Afrin Monira

ID: 2013-1-70-039

Department of Pharmacy

East West University

Submitted to

Kushal Biswas

Lecturer

Department of Pharmacy

East West University



**East West University**

# Declaration by the Research Candidate

I, **Farjana Afrin Monira**, hereby declare that the dissertation entitled “**In-vitro Assessment of Cholinesterase Inhibitory and Antioxidant Activity of *Solanum indicum* plant extracts**” submitted by me to the Department of Pharmacy, East West University, in the partial fulfilment of the requirement for the award of the degree Bachelor of Pharmacy is a complete record of original research work carried out by me during 2017, under the supervision and guidance of **Kushal Biswas**, Lecturer, Department of Pharmacy, East West University. The thesis has not formed the basis for the award of any other degree/diploma/fellowship or other similar title to any candidate of any university.

---

Farjana Afrin Monira

ID: 2013-1-70-039

Department of Pharmacy

East West University, Dhaka, Bangladesh.

# Certificate by the Supervisor

This is to certify that the thesis entitled “**In-vitro Assessment of Cholinesterase Inhibitory and Antioxidan Activity of *Solanum indicum* plant extracts**” submitted to the Department of Pharmacy, East West University, in the partial fulfilment of the requirement for the degree of Bachelor of pharmacy was carried out by **Farjana Afrin Monira, ID: 2013-1-70-039** in 2017, under the supervision and guidance of me.

The thesis has not formed the basis for the award of any other degree/diploma/fellowship or other similar title to any candidate of any university.

---

**Kushal Biswas**

**Lecturer & Supervisor**

**Department of Pharmacy,**

**East West University, Dhaka**

# **Endorsement by the Chairperson**

This is to certify that the thesis submitted to the Department of Pharmacy, East West University, Dhaka-1212, in partial fulfilment of the requirement for the Degree of Bachelor in Pharmacy, was carried out by Farjana Afrin Monira, ID: 2013-1-70-039.

---

**Dr. Chowdhury Faiz Hossain**  
**Professor & Chairperson**  
**Department of Pharmacy**  
**East West University, Dhaka**

# Acknowledgement

Firstly, all admires to **Almighty Allah** who has given me patience and capability as a gift to complete this project. I would like to give thanks to my family for their moral and financial support and for their unconditional inspiration.

I am very much willing to express my sincere indebtedness to my honorable supervisor, **Kushal Biswas**, Lecturer, Department of Pharmacy, East West University for her thoughtful ideas, scientific and technical directions on my way through; without whom this work would have been a far distant dream. I am really indebted to her for providing generous advice, constant supervision, intense support enthusiastic encouragements and reminders during the research work; for her valuable input to make the discussion more sound scientifically and finally, for her sincere and expert proof checking of the whole draft.

I would like to acknowledge Chairperson **Dr. Chowdhury Faiz Hossain**, Professor for your contribution to our association.

A project is never the work of an individual. It is more than a combination of ideas, suggestion, review, contribution and work involving folks. It cannot be completed without guidelines.

I would like to acknowledge that this dissertation has only been possible through the remarkable support of **Jawata Afnan Prithul & Synthia Sarkar** who helped me to the research by being very co-operative to be the part of my study.

I want to give thanks to **Razib Hossain** who helped in a very significant stage of this project, his tremendous support let me finish the work on time.

Then I would like to thank all the lab instructors of department of pharmacy for their immeasurable support in the laboratory regarding the equipment, reagents and so on. Finally, my all other friends, their inspiration and support helped me a lot to finish the works.

# Abstract

Reduced level of acetylcholine (ACh) is an important hallmark of Alzheimer's disease (AD), a common type of progressive neurodegenerative disorder. Effective treatment strategies rely mostly on either enhancing the cholinergic function of the brain by improving the level of ACh from being a breakdown by cholinesterase enzymes. Traditionally *Solanum indicum* (L.) has widely known for its medicinal values. Our aim is to investigate the cholinesterase inhibitory activities, Antioxidant activities of the whole plant extracts in the treatment of AD and clotting disorder. The crude methanol extract was prepared by cold extraction method and other fractions are collected by liquid liquid partitioning. To determine acetylcholinesterase (AChE) inhibitory activity Ellman's method was applied. The plant is found moderate active in inhibiting Acetylcholinesterase enzyme, as it inhibits 43.95% at 200µg/ml. Its total phenolic content, total antioxidant capability and free radical scavenging capability is also very high for this plant. But this plant lacks in containing flavonoids. of further investigations to identify the promising molecule(s) potentially useful in the treatment of AD.

KEY WORDS: Alzheimer's disease, Cholinesterase inhibitor, Clotting disorder, Antioxidant, Free Radical Scavenging, *Solanum indicum*

# Contents

## List of Contents:

Content	Page number
<b>Chapter1:</b> 1.1 Introduction	1
1.2 Brain & Alzheimer Disease	1
1.3 Brain Changes Associated with Alzheimer's Disease	2
1.4 Brain where AD Develop	3
1.5 Types of AD	3
1.6 Epidemiology	4
1.7 The AD polygenic risk score associations	5
1.8 Diagnosis	7
1.9 Expanding Impact of AD	9
1.10 Supportive diagnostic features include	10
1.11 Tests for AD diagnosis	11

1.12 Neuropathology in AD	12
1.13 Different Hypothesis for the Pathogenesis of Alzheimer's disease	13
1.14 Risk factors of Alzheimer's disease	18
1.15 Genetic Etiology of AD	19
1.16 Non-genetic Etiology of AD	23
1.17 Treatment Strategies of AD	34
<b>Chapter 2: Plant and Literature Review</b>	41
2.1 Solanum Plant	
2.2 The Scientific Classification of Solanum indicum	41
2.3 Plant Physiology	41
2.4 Geography of <i>Solanum indicum</i>	44
2.5 Chemical Constituents of <i>Solanum indicum</i>	44
2.6 Medicinal Uses of Solanum Indicum	44
2.7 Literature Review	46
<b>Chapter 3: 3.1. Chemical study</b>	48
3.1.1. In-vitro studies	48
3.1.2. Material	48



3.1.3. Collection of Plant Materials	48
3.1.4: Preparation of Plant Material	48
3.1.5. Cold extraction of the plant materials	48
3.1.6. Solvent-solvent partitioning of crude extract	49
3.2: Determination of Total Phenolics	49
3.3. Determination of Total Flavonoids	50
3.4 DPPH (1, 1-diphenyl-2-picrylhydrazyl) Free Radical Scavenging Assay	51
3.5 Determination of Total Antioxidant Capacity	52
3.6 Reducing Power Capacity Assessment	53
3.7 In-Vitro Acetyl Cholinesterase Inhibitory Studies	54
<b>Chapters 4: Results</b>	56
4.1 Determination of Total Phenolics	
4.2 Determination of Total Flavonoids	58
4.3 DPPH Radical Scavenging Activity	60
4.4 Reducing Power Capacity	63

4.5 Acetyl cholinesterase inhibitory activity assay	64
4.6 Total Antioxidant Determination	66
<b>Chapter 5: Discussion and Conclusion</b>	68
5.1 Determination of Total Phenolics	
5.2 Determination of Total Flavonoids	68
5.3 DPPH Radical Scavenging Activity	68
5.4 Reducing Power Capacity	69
5.5 Acetyl cholinesterase inhibitory activity assay	69
5.6 Total Antioxidant Determination	69

5.7 Conclusion	70
<b>Chapter 6:</b> References	71

## List of Tables

Table No.	Page No.
2.2 Scientific Classification of <i>Solanum indicum</i>	41
Table 4.1: Absorbance of gallic acid at different concentrations after treatment with FCR.	56
Table 4.2: Determination of total phenolic content	57
Table 4.3: Absorbance of catechin at different concentrations for quantitative determination of total flavonoids	58
Table 4.4: Determination of total flavonoid content	59
Table 4.7: % of cholinesterase inhibition of different parts of the plant	60
Table 4.8: Chart of absorbance for reducing power capacity	63
Table 4.9: % of inhibition for acetylcholinesterase inhibitory activity assay	64

## List of Figures

<b>Name of Figure</b>	<b>Page No.</b>
2.1 <i>Solanum indicum</i> plant	<b>42</b>
2.2 <i>Solanum indicum</i> flower and fruit	<b>43</b>
4.1: Standard curve of gallic acid for the determination of total phenolics.	<b>56</b>
4.2: Total phenolic content (mg/gm plant extract in gallic acid equivalent)	<b>57</b>
4.3 Standard curve of catechin for the determination of total flavonoids	<b>58</b>
4.4 Total flavonoid content (mg/gm plant extract in catechin equivalent) of CME	<b>59</b>
4.5 % of inhibition of different parts of plants by DPPH radical scavenging activity	<b>62</b>
4.6 Reducing power capacity of CME extract	<b>63</b>
4.7 % of inhibition for acetylcholinesterase inhibitory activity assay	<b>65</b>
4.8 Total Antioxidant content of the plant fractions	<b>66</b>

## Abstract

Reduced level of acetylcholine (ACh) is an important hallmark of Alzheimer's disease (AD), a common type of progressive neurodegenerative disorder. Effective treatment strategies rely mostly on either enhancing the cholinergic function of the brain by improving the level of ACh from being a breakdown by cholinesterase enzymes. Traditionally *Solanum indicum* (L.) has widely known for its medicinal values. Our aim is to investigate the cholinesterase inhibitory activities, Antioxidant activities of the whole plant extracts in the treatment of AD and clotting disorder. The crude methanol extract was prepared by cold extraction method and other fractions are collected by liquid liquid partitioning. To determine acetylcholinesterase (AChE) inhibitory activity Ellman's method was applied. The plant is found moderate active in inhibiting Acetylcholinesterase enzyme, as it inhibits 43.95% at 200µg/ml. Its total phenolic content, total antioxidant capability and free radical scavenging capability is also very high for this plant. But this plant lacks in containing flavonoids. of further investigations to identify the promising molecule(s) potentially useful in the treatment of AD.

KEY WORDS: Alzheimer's disease, Cholinesterase inhibitor, Clotting disorder, Antioxidant, Free Radical Scavenging, *Solanum indicum*

# Chapter 1: Introduction

## 1.1 Introduction:

Alzheimer's disease is an irreversible, progressive brain disorder that slowly destroys memory and thinking skills and, eventually, the ability to carry out the simplest tasks. In most people with Alzheimer's, symptoms first appear in their mid-60s. Alzheimer's largest risk factor is aging. However, it is not a normal part of aging. While the majority of people who have Alzheimer's are over the age of 65, it can happen in someone younger. Early-onset Alzheimer's is when the disease becomes noticeable in someone in their 40s or 50s. About 5 percent of people with this disease are in this age group.

This is a disease that progressively gets worse over time. In late stages, someone with Alzheimer's may not be able to communicate or reason with those around them. They will also eventually need full-time care for everyday life. According to the Alzheimer's Association, it is the 6th leading cause of death in the United States. The average life span of someone with the disease is eight years after diagnosis, but they can live up to 20 years depending on other health conditions. There is no cure at this time. However, there are treatments that can slow the progression and improve the quality of life for those with the disease. Alzheimer's disease is the most common cause of dementia. The word dementia describes a set of symptoms that can include memory loss and difficulties with thinking, problem-solving or language. These symptoms occur when the brain is damaged by certain diseases, including Alzheimer's disease.

Alzheimer's disease, named after the doctor who first described it (Alois Alzheimer), is a physical disease that affects the brain. During the course of the disease, proteins build up in the brain to form structures called 'plaques' and 'tangles'. This leads to the loss of connections between nerve cells, and eventually to the death of nerve cells and loss of brain tissue. People with Alzheimer's also have a shortage of some important chemicals in their brain. These chemical messengers help to transmit signals around the brain. When there is a shortage of them, the signals are not transmitted as effectively. As discussed below, current treatments for Alzheimer's disease can help boost the levels of chemical messengers in the brain, which can help with some of the symptoms.

Alzheimer's is a progressive disease. This means that gradually, over time, more parts of the brain are damaged. As this happens, more symptoms develop. They also become more severe.

## 1.2 Brain & Alzheimer Disease:

Scientists continue to unravel the complex brain changes involved in the onset and progression of Alzheimer's disease. It seems likely that damage to the brain starts a decade or more before memory and other cognitive problems become evident. During this preclinical stage of Alzheimer's disease, people seem to be symptom-free, but toxic changes are taking place in the brain. Abnormal deposits of proteins form amyloid plaques and tau tangles throughout the brain, and once-healthy neurons stop functioning, lose connections with other neurons, and die.

## Chapter 1: Introduction

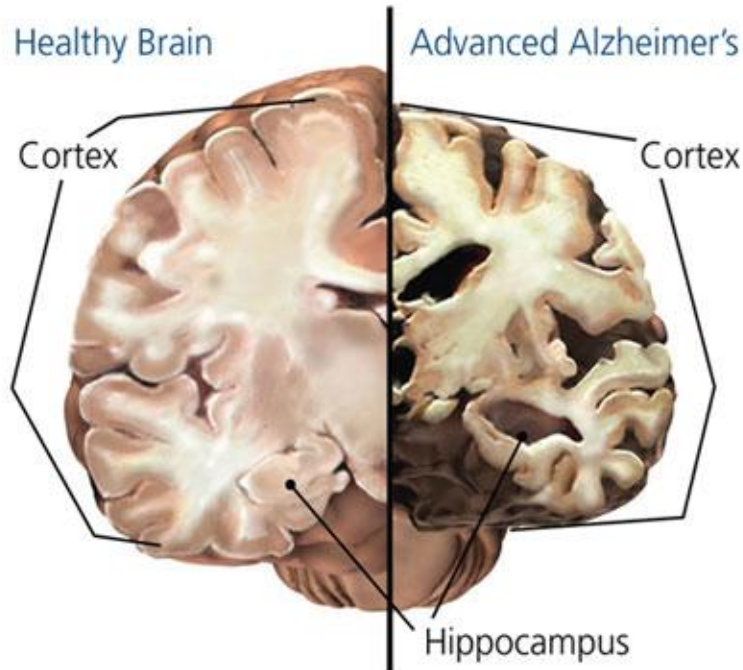


Figure 1.1: Alzheimer's Disease and Brain

The damage initially appears to take place in the hippocampus, the part of the brain essential in forming memories. As more neurons die, additional parts of the brain are affected. By the final stage of Alzheimer's, damage is widespread, and brain tissue has shrunk significantly. Read more about what happens to the brain in Alzheimer's

### 1.3 Brain Changes Associated with Alzheimer's Disease

A healthy adult brain has about 100 billion neurons, each with long, branching extensions. These extensions enable individual neurons to form connections with other neurons. At such connections, called synapses, information flows in tiny bursts of chemicals that are released by one neuron and detected by a receiving neuron. The brain contains about 100 trillion synapses. They allow signals to travel rapidly through the brain's neuronal circuits, creating the cellular basis of memories, thoughts, sensations, emotions, movements and skills. The accumulation of the protein fragment beta-amyloid (called beta-amyloid plaques) outside neurons and the accumulation of an abnormal form of the protein tau (called tau tangles) inside neurons are two of several brain changes associated with Alzheimer's. Betaamyloid plaques are believed to contribute to cell death by interfering with neuron-to-neuron communication at synapses, while tau tangles block the transport of nutrients and other essential molecules inside neurons. The brains of people with advanced Alzheimer's disease show inflammation, dramatic shrinkage from cell loss, and widespread debris from dead and dying neurons. Research suggests that the



## Chapter 1: Introduction

brain changes associated with Alzheimer's may begin 20 or more years before symptoms appear. When the initial changes occur, the brain compensates for them, enabling individuals to continue to function normally. As neuronal damage increases, the brain can no longer compensate for the changes and individuals show subtle cognitive decline. Later, neuronal damage is so significant that individuals show obvious cognitive decline, including symptoms such as memory loss or confusion as to time or place. Later still, basic bodily functions such as swallowing are impaired. While research settings have the tools and expertise to identify some of the early brain changes of Alzheimer's, additional research is needed to fine-tune the tools

### 1.4 Brain where AD Develop:

Research on cognitive aging has focused on how decline in various cortical and hippocampal regions influence cognition. However, brainstem regions play essential modulatory roles, and new evidence suggests that, among these, the integrity of the locus coeruleus (LC)–norepinephrine (NE) system plays a key role in determining late-life cognitive abilities. The LC is especially vulnerable to toxins and infection and is often the first place Alzheimer's-related pathology appears, with most people showing at least some tau pathology by their mid-20s. On the other hand, NE released from the LC during arousing, mentally challenging, or novel situations helps to protect neurons from damage, which may help to explain how education and engaging careers prevent cognitive decline in later years.

In late life, lower LC neural density is associated with cognitive decline. Because of the long unmyelinated axons of its neurons, high exposure to blood flow, and location adjacent to the 4th ventricle, the LC is especially vulnerable to toxins. The tau pathology precursor of Alzheimer's disease emerges in the LC by early adulthood in most people. However, the pathology typically spreads slowly, and only some end up with clinically evident Alzheimer's disease. Norepinephrine helps to protect neurons from factors that accelerate Alzheimer's disease, such as inflammation and excitotoxicity. Activation of the LC–NE system by novelty and mental challenge throughout life may contribute to cognitive reserve.

### 1.5 Types of AD:

**Early-onset Alzheimer's:** This type happens to people who are younger than age 65. Often, they're in their 40s or 50s when they're diagnosed with the disease. It's rare -- up to 5% of all people with Alzheimer's have early-onset. People with Down syndrome have a higher risk for it.

Scientists have found a few ways in which early-onset Alzheimer's is different from other types of the disease. People who have it tend to have more of the brain changes that are linked with Alzheimer's. The early-onset form also appears to be linked with a defect in a specific part of a person's DNA: chromosome 14. A form of muscle twitching and spasm, called myoclonus, is also more common in early-onset Alzheimer's.

## Chapter 1: Introduction

**Late-onset Alzheimer's.** This is the most common form of the disease, which happens to people age 65 and older. It may or may not run in families. So far, researchers haven't found a particular gene that causes it. No one knows for sure why some people get it and others don't.

**Familial Alzheimer's disease (FAD):** This is a form of Alzheimer's disease that doctors know for certain is linked to genes. In families that are affected, members of at least two generations have had the disease. FAD makes up less than 1% of all cases of Alzheimer's. Most people who have early onset Alzheimer's have FAD.

### **How Alzheimer's Disease affect the brain:**

The changes that take place in the brain begin at the microscopic level long before the first signs of memory loss. The brain has 100 billion nerve cells (neurons). Each nerve cell connects to many others to form communication networks. In addition to nerve cells, the brain includes cells specialized to support and nourish other cells. Groups of nerve cells have special jobs. Some are involved in thinking, learning and memory. Others help us see, hear, smell and tell our muscles when to move. Brain cells operate like tiny factories. They receive supplies, generate energy, construct equipment and get rid of waste. Cells also process and store information and communicate with other cells. Keeping everything running requires coordination as well as large amounts of fuel and oxygen. Scientists believe Alzheimer's disease prevents parts of a cell's factory from running well. They are not sure where the trouble starts. But just like a real factory, backups and breakdowns in one system cause problems in other areas. As damage spreads, cells lose their ability to do their jobs and eventually die.

### **1.6 Epidemiology:**

Aging has been associated with cognitive impairment affecting working memory, processing speed, executive function and episodic memory, but different mechanisms and underlying brain changes have been related to each cognitive domain. Cognitive functions associated with frontal cortex structures and networks, particularly processing speed and working memory, have been associated with 'normal' brain aging (BA) and vascular-related white matter changes. Episodic memory impairment in turn has been attributed to Alzheimer disease (AD), the prevalence of which exponentially increases with age. AD is characterized by tau pathology spreading from the medial temporal lobe and neocortical widespread amyloid beta deposition. Amyloid- and tau-independent mechanisms like mitochondrial dysfunction and oxidative stress have been linked to BA, although this does not exclude that the same aging-related mechanisms can lead to increased AD-related pathology.

Findings from previous studies have shown that BA in individuals without concurrent pathology is associated with pronounced gray matter loss, particularly in frontal and parietal lobes, whereas amnesic mild cognitive impairment and AD subjects have shown atrophy patterns in the

## Chapter 1: Introduction

temporal lobe, hippocampus and parahippocampalgyrus. In addition, co-morbid conditions such as type 2 diabetes mellitus, hypertension and arteriolosclerosis are also associated with brain atrophy and might have an additive effect on atrophy related to BA. While many studies independently showed spatially specific atrophy patterns occurring with normal aging or due to disease, structural brain changes in advanced BA (ABA), defined as significant deviation from typical BA trajectories, have not been systematically compared with AD-like brain changes in population-based studies. In addition, whether different co-morbid and genetic conditions are associated with BA and AD is still uncovered in the general community.

To assess ABA and AD-like patterns a traditional approach using simple radiological measures like hippocampal volume, which is commonly used to investigate brain changes related to aging and AD, might not be able to capture the complex spectrum of changes, and more sophisticated methods are required. Herein, we leverage advanced pattern analysis techniques to derive a new quantitative index for brain changes as a function of age (Spatial Pattern of Atrophy for Recognition of BA (SPARE-BA)), and to compare those with spatial brain atrophy patterns specifically found in clinically diagnosed AD cases, using the Spatial Patterns of Abnormality for Recognition of Early Alzheimer's Disease (SPARE-AD) index in a large sample from the population-based Study of Health in Pomerania (SHIP) that spanned a wide age range (20–90 years,  $n=2705$ ).

To our knowledge, the current study is the first to employ high-dimensional pattern recognition techniques to assess ABA patterns and to determine similarities and differences with clinical AD patterns in a large population-based cohort spanning almost the entire adulthood age range.

### 1.7 The AD polygenic risk score associations

Finally, the AD polygenic risk score was not significantly associated with SPARE-BA across the whole age range or in analyses restricted to older subjects, it was only close to significant association in the whole age range sample ( $r=0.044$ ,  $P=0.069$ ) and significantly associated with SPARE-AD in older subjects ( $r=0.124$ ,  $P=0.016$ ) as reported in Supplementary Analysis. This differences in association with polygenic risk score for SPARE-BA vs SPARE-AD offers additional support for the hypothesis that AD-related genetic risk leads to distinctive atrophy patterns. In fact the increase in prevalence of AD is more pronounced after age 65,42 which is in line with the significant association we found between SPARE-AD and the polygenic risk score at older age. The underlying disease process may start years before the AD diagnosis in elderly individuals. Singh-Manoux et al.<sup>56</sup> showed that the brain function started to deteriorate as early as age 45. However, we did not find a significant association between AD polygenic risk score and SPARE-AD in the whole age range sample, likely reflecting the fact that only a small subset of individuals could be in a preclinical AD stage, or that SPARE-AD captures neurodegenerative changes occurring relatively later in the disease process.

## Chapter 1: Introduction

This study has several strengths including the large sample size in a population-based sample and the use of novel pattern analysis approaches to investigate BA. However, this study has also limitations, which include the lack of longitudinal MRI scans and detailed clinical information for the complete SHIP cohort.

In summary, the current study is the first, to our knowledge, to employ high-dimensional pattern recognition techniques to assess BA patterns in a cohort of this size and show that it has a unique spatial pattern of brain atrophy that differs from the one found in AD.

### **Morbidity & Mortality:**

Alzheimer's disease is officially listed as the sixth-leading cause of death in the United States. It is the fifth-leading cause of death for those age 65 and older. However, it may cause even more deaths than official sources recognize. Alzheimer's is also a leading cause of disability and poor health (morbidity). Before a person with Alzheimer's dies, he or she lives through years of morbidity as the disease progresses.

### **Deaths from Disease:**

It is difficult to determine how many deaths are caused by Alzheimer's disease each year because of the way causes of death are recorded. According to data from the National Center for Health Statistics of the Centers for Disease Control and Prevention (CDC), 93,541 people died from Alzheimer's disease in 2014. The CDC considers a person to have died from Alzheimer's if the death certificate lists Alzheimer's as the underlying cause of death, defined by the World Health Organization as “the disease or injury which initiated the train of events leading directly to death.”

Severe dementia frequently causes complications such as immobility, swallowing disorders and malnutrition that significantly increase the risk of serious acute conditions that can cause death. One such condition is pneumonia, which is the most commonly identified cause of death among elderly people with Alzheimer's or other dementias. Death certificates for individuals with Alzheimer's often list acute conditions such as pneumonia as the primary cause of death rather than Alzheimer's. As a result, people with Alzheimer's disease who die due to these acute conditions may not be counted among the number of people who died from Alzheimer's disease according to the World Health Organization definition, even though Alzheimer's disease may well have caused the acute condition listed on the death certificate. This difficulty in using death certificates to accurately determine the number of deaths from Alzheimer's has been referred to as a “blurred distinction between death with dementia and death from dementia.”

Another way to determine the number of deaths from Alzheimer's disease is through calculations that compare the estimated risk of death in those who have Alzheimer's with the estimated risk of

## Chapter 1: Introduction

death in those who do not have Alzheimer's. A study using data from the Rush Memory and Aging Project and the Religious Orders Study estimated that 500,000 deaths among people age 75 and older in the United States in 2010 could be attributed to Alzheimer's (estimates for people age 65 to 74 were not available), meaning that those deaths would not be expected to occur in that year if those individuals did not have Alzheimer's.

The true number of deaths caused by Alzheimer's is somewhere between the number of deaths from Alzheimer's recorded on death certificates and the number of people who have Alzheimer's disease when they die. According to 2014 Medicare claims data, about one-third of all Medicare beneficiaries who die in a given year have been diagnosed with Alzheimer's or another dementia. Based on data from the Chicago Health and Aging Project (CHAP) study, in 2017 an estimated 700,000 people age 65 and older in the United States will have Alzheimer's when they die. Although some seniors who have Alzheimer's disease at the time of death die from causes that are unrelated to Alzheimer's, many of them die from Alzheimer's disease itself or from conditions in which Alzheimer's was a contributing cause, such as pneumonia.

Irrespective of the cause of death, among people age 70, 61 percent of those with Alzheimer's are expected to die before age 80 compared with 30 percent of people without Alzheimer's.

### **1.8 Diagnosis:**

There is no single test for Alzheimer's. Instead, physicians, often with the help of specialists such as neurologists and geriatricians, use a variety of approaches and tools to help make a diagnosis. They include the following:

- Obtaining a medical and family history from the individual, including psychiatric history and history of cognitive and behavioral changes.
- Asking a family member to provide input about changes in thinking skills and behavior.
- Conducting cognitive tests and physical and neurologic examinations.
- Having the individual undergo blood tests and brain imaging to rule out other potential causes of dementia symptoms, such as a tumor or certain vitamin deficiencies.

Diagnosing Alzheimer's requires a careful and comprehensive medical evaluation. Although physicians can almost always determine if a person has dementia, it may be difficult to identify the exact cause. Several days or weeks may be needed for the individual to complete the required tests and examinations and for the physician to interpret the results and make a diagnosis.

Current diagnosis methods: The Mayo Clinic (2016) has published a set of diagnostic tests because at this time there is no single medical test to determine if a person is suffering from

## Chapter 1: Introduction

Alzheimer's disease. Diagnosis is difficult and requires extensive and careful medical evaluation. Because neurons affected by Alzheimer's disease begin to decay the amount of healthy neurotransmitters as much as ten to twenty years before symptoms begin to affect the patient, damage is already pronounced at the mild stage of the disease. Typically, patients are diagnosis in the Mild stage of Alzheimer's disease. Brain areas that have already deteriorated when diagnosis has been made are the hippocampus, the frontal cortex, and occipital lobes and at this stage of degeneration the damage is irreversible.

The Mayo Clinic tests (2016) include a thorough medical history, physical exams, and neurological exams. The physical tests include testing reflexes, coordination, sight and hearing, and muscle tone and strength. These tests determine if testing for Alzheimer's should proceed. Lab tests determine that conditions such as thyroid disorders, vitamin deficiencies, and diabetes are not causes of memory loss and confusion. An extensive mental status assessment is performed to assess cognitive function. The Mayo Clinic suggests the use of brain imaging such as CT scans to rule out tumors, strokes, and head injuries as causes for patient's symptoms. MRI scans are used to assess if brain atrophy implicates Alzheimer's disease as the cause of symptoms. Recently improved PET scans use glucose to show brain activity and can also show brain levels of amyloid plaques and tangles, two brain abnormalities associated with Alzheimer's disease. Unfortunately, the new PET scans are not yet available to all medical doctors. These PET techniques are only found in research and clinical trial settings (Mayo Clinic, 2016). Cerebrospinal fluid can be tested for biomarkers that indicate a genetic factor for early on-set Alzheimer's disease (Mayo Clinic, 2016). Only a small fraction of 1% of people worldwide have the rare genetic form of Alzheimer's disease, these people tend to show signs of amyloid plaques in PET scans and in cerebrospinal fluid tests. Another biomarker of interest is tau, which is implicated in the development of neurofibrillary tangles that build up in the brains of Alzheimer's disease patients. Notably these tangles are found in the hippocampus or memory center of the brain. Tau mimics the shape of healthy cells and destroys them, however genetic testing for this biomarker is implausible at this time as there is no scan to detect the tau in a living patient (Landau, 2010).

Currently the diagnosis of Alzheimer's disease is difficult because no specific cause has been discovered. With no specific cause identified, there are no reliable treatments to cure or reverse the atrophy that develops in the brain afflicted with Alzheimer's disease. Improved participant numbers in research and clinical trials will lead to a far superior diagnostic system and an opportunity to develop sophisticated tools for earlier diagnosis. In addition to advancing diagnosis increased research will inevitably lead to scientific breakthroughs in the discovery of a cure.

### **1.9 Expanding Impact of AD:**

Binding of acetylcholine from one neuron to another is the very basis of brain activity, and the neurons responsible for producing acetylcholine are affected by Alzheimer's disease. As

## Chapter 1: Introduction

Alzheimer's disease progresses acetylcholine production is reduced and neurons slowly lose function and begin to die after which neurons and neurotransmitters can no longer be reproduced or repaired. The area in the brain responsible for memory retention is the hippocampus, and it is commonly the first area to be affected by Alzheimer's disease. In a healthy brain the hippocampus becomes active during memory formation and retrieval. In a brain affected by Alzheimer's disease, forming new and retrieving old memories becomes increasingly more difficult due to the loss of acetylcholine-producing neurons in the hippocampus. As hippocampal neurons continue to decay, communication between nerve cells is permanently lost. Most commonly memory loss is one of the first observable symptoms of Alzheimer's disease. Motor activity is generated in the motor cortex, which is located in the frontal lobe. As neurons decay and die in the motor cortex, movement becomes increasingly difficult and proceeds to a total loss of mobility (National Institute on Aging, 2016). The Alzheimer's foundation of America (AFA) identifies three stages of Alzheimer's disease as mild, moderate, and severe. These stages reflect the movement of the disease from the central areas of the brain outward. As the disease progresses the symptoms become more severe. In the mild stage of Alzheimer's disease, the hippocampus appears to be the area affected the most. Patients experience short-term memory loss, most often have trouble remembering what they were doing, saying, or where they were going. Patients often find themselves more confused and find themselves struggling to remember the steps needed to complete a previously normal task. Complaints of memory loss are often the first indication that a person is suffering from Alzheimer's disease. Patients begin to have increased trouble speaking and understanding what other people are saying, this could perhaps be because of the inability to remember words and word meanings. Patients begin to need outside assistance. Family and friends will also begin to notice unexpected behaviors and personality changes. In the moderate stage of Alzheimer's disease, patients begin to lose long-term memory as well as permanent loss of short term memories. The ability to learn new tasks is extremely limited. In this stage the areas responsible for memories of specific information such as facial recognition rapidly begins to decline, with intermittent bouts of lucidity. The spread of the disease from the central brain regions outward is now noticeable as patients begin to lose the ability to differentiate between and recognize family members. Processing

### **Diagnosis of Alzheimer's Disease:**

A doctor can diagnose most cases of Alzheimer's. However, nobody can be 100% sure until after death, when a microscopic examination of the brain detects plaques and tangles. There is no basic testing, such as a blood test, urine test, biopsy, or image scan for diagnosing Alzheimer's disease. A brain scan may help identify changes in the brain.

### **Lund-Manchester Criteria for Frontotemporal Dementia:**

The Lund-Manchester diagnostic criteria for frontotemporal dementia require all of the following core components to be present:

## Chapter 1: Introduction

1. Insidious onset and gradual progression,
2. Early decline in social interpersonal conduct,
3. Early impairment in regulation of personal conduct,
4. Early emotional blunting,
5. Early loss of insight.

### **1.10 Supportive diagnostic features include:**

#### **A. Behavioral disorder:**

- a.* decline in personal hygiene and grooming
- b.* mental rigidity and inflexibility
- c.* distractibility and impersistence
- d.* hyperorality and dietary change
- e.* utilization behavior

#### **B. Speech and language:**

Altered speech output (spontaneity and economy of speech, press of speech), stereotypy of speech, echolalia, perseveration, mutism

#### **C. Physical signs:**

Primitive reflexes, incontinence, akinesia, rigidity, tremor, low/labile blood pressure.

#### **D. Investigations:**

- a.* Neuropsychology: impaired frontal lobe tests; no amnesia or perceptual deficits
- b.* EEG: normal on conventional EEG despite clinically-evident dementia
- c.* Brain imaging: predominant frontal and/or anterior temporal abnormality

#### **Ruling out other conditions:**

Doctors will usually carry out some tests to rule out other conditions which typically have symptoms that are also present in Alzheimer's. Below are some examples of diseases and conditions that need to be ruled out:

- a.* Anxiety
- b.* Brain tumor
- c.* Depression



- d.* Infection
- e.* Thyroid problems
- f.* Vitamin deficiency

### **1.11 Tests for AD diagnosis:**

#### **A. Blood tests:**

To see if the patient has a thyroid disorder or vitamin deficiency.

#### **B. Neuropsychological testing:**

This involves an extensive assessment of cognitive (thinking) and memory skills. It can take several hours. These types of tests are extremely useful in detecting Alzheimer's as well as other dementias early on.

#### **C. MRI (magnetic resonance imaging) scan:**

A powerful magnetic field is created by passing an electric current through the wire loops. Meanwhile, other coils in the magnet send and receive radio waves. This triggers protons in the body to align themselves. Once aligned, radio waves are absorbed by the protons, which stimulate spinning. Energy is released after "exciting" the molecules, which in turn emits energy signals that are picked up by the coil. This information is then sent to a computer which processes all the signals and generates it into an image. The final product is a 3-D image representation of the area being examined, which in this case would be the brain.

#### **D. PET (positron emission tomography) scan:**

This test uses radiation, or nuclear medicine imaging, to produce 3-dimensional, color images of the functional processes within the human body. It is very useful in helping the doctor diagnose Alzheimer's disease. A PET scan that measures uptake of sugar in the brain significantly improves the accuracy of diagnosing a type of dementia often mistaken for Alzheimer's disease, a study revealed.

#### **E. CT (computerized tomography) scan:**

This device uses digital geometry processing to generate a 3-dimensional (3-D) image of the inside of an object. The 3-D image is made after many 2-dimensional X-ray images are taken around a single axis of rotation - in other words, many pictures of the same area are taken from many angles and then placed together to produce a 3-D image.

#### **F. Biomarker Tests**

## Chapter 1: Introduction

The new criteria and guidelines identify two biomarker categories:

- (1) Biomarkers showing the level of beta-amyloid accumulation in the brain
- (2) Biomarkers showing that neurons in the brain are injured or actually degenerating.

Many researchers believe that future treatments to slow or stop the progression of Alzheimer's disease and preserve brain function (called "disease-modifying" treatments) will be most effective when administered during the preclinical and MCI stages of the disease. Biomarker tests will be essential to identify which individuals are in these early stages and should receive disease-modifying treatment. They also will be critical for monitoring the effects of treatment. At this time, however, more research is needed to validate the accuracy of biomarkers and better understand which biomarker test or combination of tests is most effective in diagnosing Alzheimer's disease. The most effective test or combination of tests may differ depending on the stage of the disease and the type of dementia.

### 1.12 Neuropathology in AD:

Alzheimer's disease is characterized by loss of neurons and synapses in the cerebral cortex and certain subcortical regions. This loss results in gross atrophy of the affected regions, including degeneration in the temporal lobe and parietal lobe, and parts of the frontal cortex and cingulate gyrus. Degeneration is also present in brainstem nuclei like the locus coeruleus. Studies using MRI and PET have documented reductions in the size of specific brain regions in people with AD as they progressed from mild cognitive impairment to Alzheimer's disease, and in comparison with similar images from healthy older adults.

There are two major hallmarks in the brain that are associated with the disease processes of AD.

1. Amyloid Plaques.
2. Neurofibrillary Tangles.

The formation of amyloid plaques and neurofibrillary tangles are thought to contribute to the degradation of the neurons (nerve cells) in the brain and the subsequent symptoms of Alzheimer's disease.

#### **Amyloid Plaques:**

One of the hallmarks of Alzheimer's disease is the accumulation of **amyloid plaques** between nerve cells (neurons) in the brain. **Amyloid** is a general term for protein fragments that the body produces normally. **Beta amyloid** is a protein fragment snipped from an amyloid precursor protein (APP). In a healthy brain, these protein fragments are broken down and eliminated. In Alzheimer's disease, the fragments accumulate to form hard, insoluble plaques.

## Chapter 1: Introduction

### Neurofibrillary Tangles:

**Neurofibrillary tangles** are insoluble twisted fibers found inside the brain's cells. These tangles consist primarily of a protein called **tau**, which forms part of a structure called a microtubule. The microtubule helps transport nutrients and other important substances from one part of the nerve cell to another. In Alzheimer's disease, however, the **tau** protein is abnormal and the microtubule structures collapse.

### Changes in the brain during AD:

One of the most consistent changes in Alzheimer's disease is a reduction of the activity of choline acetyltransferase in the cerebral cortex and hippocampus. Selective loss of cholinergic neurons occurs in the cholinergic projection pathway from deep nuclei located in the septum near the diagonal band of Broca to the hippocampus, and from the nearby basal nucleus of Meynert, which provides the major cholinergic input to the neocortex and to the cerebral cortex. The basal nucleus of Meynert undergoes profound neuron loss in Alzheimer's disease. The neocortex exhibits a loss of cholinergic fibers and receptors and a decrease of both choline acetyltransferase and acetylcholinesterase enzyme activity. Reductions also occur in the corticotropin-releasing factor and somatostatin, both of which have been identified within degenerating neurites of the neuritic plaque. Glutamatergic neurons are also involved, which account for many of the large neurons lost in the cerebral cortex and hippocampus in Alzheimer's disease.

### 1.13 Different Hypothesis for the Pathogenesis of Alzheimer's disease:

The pathogenesis of Alzheimer's disease is highly complex. While several pathologies characterize this disease, amyloid plaques, composed of the  $\beta$ -amyloid peptide are hallmark neuropathological lesions in Alzheimer's disease brain. Indeed, a wealth of evidence suggests that  $\beta$ -amyloid is central to the pathophysiology of AD and is likely to play an early role in this intractable neurodegenerative disorder. Many molecular lesions have been detected in Alzheimer's disease, but the overarching theme to emerge from the data is that an accumulation of misfolded proteins in the aging brain results in oxidative and inflammatory damage, which in turn leads to energy failure and synaptic dysfunction. There are several hypothesis are established for the pathogenesis of AD. They are:

- a.  $\beta$ -Amyloid cascade hypothesis,
- b. Cholinergic hypothesis,
- c. Oxidative stress hypothesis,
- d. Tau hypothesis,
- e. Inflammatory hypothesis.

### $\beta$ -Amyloid Cascade Hypothesis:

## Chapter 1: Introduction

Generation of A $\beta$  from APP requires two proteolytic processes by several different proteases. The amyloidogenic pathway results in production of intact A $\beta$ , whereas the non-amyloidogenic pathway precludes intact A $\beta$ -formation. In the amyloidogenic pathway, APP is first cleaved at the  $\beta$ -secretase site by  $\beta$ -site cleaving enzyme (BACE), generating a soluble extracellular fragment of APP (sAPP $\beta$ ) and a membrane-bound 99 amino acid residue C-terminal fragment (C99). C99 is further processed by cleavage at the  $\gamma$ -secretase site, located within the APP transmembrane domain, to generate A $\beta$ -peptides of different lengths of the two main variants formed; A $\beta$ 1-40 is the most abundant whereas A $\beta$ 1-42 is produced to a lesser. The amyloid cascade hypothesis has been one of the leading theories in the pathogenic events causing AD. This hypothesis postulates a causative role for A $\beta$  deposition in the pathogenesis of AD, and the NFTs, inflammatory response, cell loss, vascular damage and dementia follow as a direct result of this deposition. Evidence that A $\beta$  play a casual role in the development of AD came from the following studies. First, mutations in APP, PS1 and PS2 genes that are linked to the early onset forms of AD increase the production of total A $\beta$  or specifically increase the relative amount of A $\beta$ 1-42. Second, individuals with Down's syndrome overproduce A $\beta$  and develop AD-like dementia and neuropathology. Third, the levels of deposited A $\beta$  correlate with cognitive decline and severity of the disease in both AD patients and transgenic mice. Fourth, fibrillar A $\beta$  has been shown to be neurotoxic *in vitro* and is able to mediate neurotoxic effects, inflammatory responses and abnormal tau phosphorylation. Moreover, several reports suggest a casual link between A $\beta$  and impaired neuronal function and cognitive decline. Recently, attention has been focused on which form (monomers, oligomers, protofibrils or fibrils) of amyloid species has the most deleterious effects. Several studies have suggested that the oligomeric and protofibrillar forms of amyloid as the most toxic. Even if the amyloid cascade hypothesis is convincing, it does not fully explain the role of tangles and/or inflammatory response. One argument against the amyloid cascade hypothesis is that the APP/PSI double transgenic mice only develop plaques pathology, but not the NFTs in the brain. Recently, amyloid deposition was shown to precede tangle formation in a triple transgenic mouse model overexpressing mutant APP and mutant tau on a PSI mutation Knock-in background.

Even if the amyloid cascade hypothesis is convincing, it does not fully explain the role of tangles and/or inflammatory response. One argument against the amyloid cascade hypothesis is that the APP/PSI double transgenic mice only develop plaques pathology, but not the NFTs in the brain. Recently, amyloid deposition was shown to precede tangle formation in a triple transgenic mouse model overexpressing mutant APP and mutant tau on a PSI mutation Knock-in background.

### **Cholinergic hypothesis:**

Acetylcholine is an important neurotransmitter in brain regions involving memory. As expected, loss of cholinergic activity correlates with cognitive impairment. A variety of studies in humans indicate that basal forebrain and rostral forebrain cholinergic pathways including converging

## Chapter 1: Introduction

projections to the thalamus serve important functional roles in conscious awareness, attention, working memory and a number of additional mnemonic processes.

For more than 20 years, studies of the brains of those with advanced age and Alzheimer's disease (AD) have consistently found damage or abnormalities in these pathways (particularly basal forebrain projections) that appeared to correlate well with the level of cognitive decline. As a result, the so-called "cholinergic hypothesis" was developed, which essentially states that a loss of cholinergic function in the central nervous system contributes significantly to the cognitive decline associated with advanced age and AD. In AD, cholinergic abnormalities are the most prominent of neurotransmitter changes, primarily because of the reduced activity of choline acetyltransferase (an enzyme involved in acetylcholine synthesis). By late-stage AD, the number of cholinergic neurons are markedly reduced, particularly in the basal forebrain. One of the most prominent features observed in AD patients is a deficiency of acetylcholine (ACh), a neurotransmitter found in the synapses of the cerebral cortex. The cholinesterase enzyme exists in two different forms in humans, AChE and butyrylcholinesterase (BuChE). AChE is the main cholinesterase in the CNS, while BuChE, originated from glial cells, is more common in serum. Decreased AChE activity and stable or increased BuChE activities were detected in the brains of AD. Most of the neocortical AChE activity in AD brain was found associated with NPs, in which it colocalized with A $\beta$  deposits including both the diffuse amyloid deposits and the mature NPs. Further studies showed that AChE promoted the aggregation of A $\beta$  peptides and accelerated the formation of amyloid plaque, suggesting that AChE may play a pathogenic role in AD by influencing A $\beta$  processing. It has also been shown that A $\beta$  which aggregates with AChE is more toxic to cells compared to aggregates of A $\beta$  alone.

### **Oxidative stress hypothesis:**

Oxidation can include the combination of a substance with oxygen or free radical damage. The oxidative process of adding an oxygen molecule to a protein can be a normal part of cellular function or may be aberrant, with a resulting change in the protein's form and ability to function properly. Free radical damage occurs when an oxygen or nitrogen molecule containing an unpaired extra electron (termed species) reacts with other molecules to achieve a stable configuration. During this process a high-energy electron is thrown off (termed a free radical) that can cause cellular and molecular damage. Either of these oxidative processes can cause oxidative stress with resulting cellular damage from oxidase. The central nervous system (CNS) is especially vulnerable to free radical damage as a result of the brain's high oxygen consumption rate, its abundant lipid content and the relative paucity of antioxidant enzymes compared with other tissues. AD brain is under extensive oxidative stress as manifested by lipid peroxidation, protein oxidation and DNA oxidation. A $\beta$  might be the central to the pathogenesis of AD. A $\beta$  has been shown to induce protein oxidation and lipid peroxidation *in vitro* and *in vivo*. Many studies have indicated that A $\beta$ -induced oxidative stress is involved in the pathogenesis of AD.

## Chapter 1: Introduction

Lipid peroxidation is an important mechanism of neurodegeneration in AD brain. Many studies have shown increased lipid peroxidation in several regions of AD brain, where the histopathologic alterations are very noticeable. It has been shown that there is a strong regional correlation between the thiobarbituric acid reactive substances (TBARS), one indicator of lipid peroxidation, antioxidant enzymes, the presence of NPs and NFT in AD brain. A $\beta$  is widely reported to cause lipid peroxidation in brain cell membranes in a manner that is inhibited by free radical antioxidants.

A $\beta$  leads to an increased level of 4-hydroxy-2-nonenal (4-HNE), one of the major products of lipid peroxidation, in hippocampal and cortical neuronal cells. Increased 4-HNE was found in AD brain and it was proven to be toxic to hippocampal neuronal cells. 4-HNE can also increase the vulnerability of cultured hippocampal neurons to excitotoxicity, as well as an alteration in multiple cellular functions including glucose or glutamate transport.

### **Tau Hypothesis:**

Neurofibrillary tangles, which are filamentous inclusions in pyramidal neurons, occur in Alzheimer's disease and other neurodegenerative disorders termed tau hypothesis.

The number of neurofibrillary tangles is a pathologic marker of the severity of Alzheimer's disease. The major component of the tangles is an abnormally hyperphosphorylated and aggregated form of tau. Normally an abundant soluble protein in axons, tau promotes assembly and stability of microtubules and vesicle transport. Hyperphosphorylated tau is insoluble, lacks affinity for microtubules and self-associates into paired helical filament structures. Enzymes that add and those that remove phosphate residues regulate the extent of tau phosphorylation.<sup>[48]</sup> Like A $\beta$  oligomers, intermediate aggregates of abnormal tau molecules are cytotoxic and impair cognition. Insoluble helical filaments may be inert, however, since decreases in axonal transport and neuron number are independent of the burden of neurofibrillary tangles. These helical filaments sequester toxic intermediate tau species, a process that may be protective. More than 30 mutations of *Tau* on chromosome 17 have been detected in front temporal dementia with parkinsonism. By contrast, *Tau* mutations do not occur in Alzheimer's disease, and the extent of neuron loss is out of proportion to the number of neurofibrillary tangles. Nevertheless, increased levels of phosphorylated and total tau in the cerebrospinal fluid correlate with reductions in scores on cognitive examinations. Elevated levels of phosphotau amino acids T181, T231, and total tau in the cerebrospinal fluid together constitute a biomarker test with good accuracy for predicting incipient Alzheimer's disease in patients with mild cognitive impairment. Experimental evidence indicates that A $\beta$  accumulation precedes and drives tau aggregation. Moreover, A $\beta$ -induced degeneration of cultured neurons and cognitive deficits in mice with an Alzheimer's disease-like illness require the presence of endogenous tau. Increased oxidative stress, the impaired protein-folding function of the endoplasmic reticulum and deficient proteasome-mediated and autophagic-mediated clearance of damaged proteins-

## Chapter 1: Introduction

- a. All of which are also associated with aging,
- b. Accelerate the accumulation of amyloid and tau proteins in Alzheimer's disease.

### **Inflammatory Hypothesis:**

Neurons are not the only brain cells affected in AD. Microglia, 1 of 3 glial cell types (along with astrocytes and oligodendrocytes) in the CNS, is involved in immune and inflammatory responses to injury or infection within the brain. Several lines of evidence have proposed that inflammation may play a significant role in the pathogenesis of AD. According to the “inflammation hypothesis”, the deposition of amyloid in AD brain brings about activation of microglia and astrocytes, initiating a pro-inflammatory cascade that results in the release of potentially neurotoxic substances, cytokines and other related compounds, bringing about degenerative changes in neurons. Reactive astrocytes and activated microglia are often found in and around amyloid plaques in the brains of AD patients and APP transgenic mice.

### **Other hypotheses:**

Herpes simplex virus type 1 has been proposed to play a causative role in people carrying the susceptible versions of the apoE gene. Some have hypothesized that dietary copper may play a causal role.

Another hypothesis asserts that the disease may be caused by age related myelin breakdown in the brain. Iron released during myelin breakdown is hypothesized to cause further damage. Homeostatic myelin repair processes contribute to the development of proteinaceous deposits such as beta-amyloid and tau.

### **1.14 Risk factors of Alzheimer's disease:**

Although a great deal of research has been done and is currently being done on the possible causes of Alzheimer's, experts are still not sure why the brain cells deteriorate. However, there are several factors which are known to be linked to a higher risk of developing the disease. These include:

### 1.15 Genetic Etiology of AD:

#### a. APP:

So far there are sixteen known mutations within the vicinity of the  $\beta$  amyloid ( $A\beta$ ) region on the APP gene. These mutations include the AP 670/671 double Swedish mutation, the APP692 Flemish mutation, the APP 717 London mutation and the APP693 Arctic mutation. Due to their strategic localization at the enzymatic cleavage sites of the  $\beta$  and  $\delta$  secretases, all known APP mutations alter APP metabolism and subsequently lead to an accumulation of  $A\beta$ , which forms the major components of AD amyloid plaque deposits.

#### b. Presenilin 1 and 2:

The vast majority of all known familial AD mutations have been found in the gene encoding PS1. To date, 146 mutations in PS1 on chromosome 14 have been reported to cause autosomal dominant AD in several hundred families worldwide. In contrast to PS1, very few mutations leading to AD have been found in the PS2 gene, with a later age of onset than PS1 mutation carriers. Mutations in both of these genes lead to the increased production of the more fibrillogenic  $A\beta$ -1-42 by selectively increasing  $\gamma$ -secretase cleavage of APP. PS1 mutation causes the earliest and most aggressive forms of AD, commonly leading to a clinical onset of AD before the age of 50.

#### c. APOE:

APOE is a lipoprotein that plays a central role in lipoprotein metabolism and cholesterol homeostasis. APOE has three different isoforms  $E_2$ ,  $E_3$  and  $E_4$  encoded by the three alleles of varying frequency: APOE  $\epsilon$ -2 7-8%,  $\epsilon$ -3 77-78%,  $\epsilon$ -4 14-16%. APOE  $\epsilon$ -4 is identified as a susceptibility gene for late onset AD. The frequency of the APOE  $\epsilon$ -4 allele is increased in AD patients and a dose dependent risk for developing AD is observed with one or two copies of the  $\epsilon$ -4 allele. The mechanisms by which APOE  $\epsilon$ -4 allele contributes to AD pathogenesis is somewhat unclear. Several studies from knockout and transgenic mice suggest that APOE  $\epsilon$ -4 facilitates the aggregation and deposition of  $A\beta$ .

### 1.16 Non-genetic Etiology of AD:

#### a. Age:

After the age of 65 the risk of developing Alzheimer's doubles every five years. Although Alzheimer's is predominantly a disease that develops during old age, some younger people may also develop the condition.



## Chapter 1: Introduction

### **b. Type II Diabetes:**

There is growing evidence of a link between Alzheimer's disease and type II diabetes. In type II diabetes insulin does not work effectively to convert blood sugar into energy. This inefficiency results in production of higher levels of insulin and blood sugar which may harm the brain and contribute to the progression of Alzheimer's disease.

### **c. Oxidative Damage:**

Free radicals are unstable molecules that sometimes result from chemical reactions within cells. These molecules seek stability by attacking other molecules, which can harm cells and tissue and may contribute to the neuronal brain cell damage caused by Alzheimer's.

### **d. Inflammation:**

Inflammation is a natural, but sometimes harmful, healing bodily function in which immune cells rid themselves of dead cells and other waste products. As protein plaques develop, inflammation results, but it is not known whether this process is damaging and a cause of Alzheimer's, or part of an immune response attempting to contain the disease.

### **e. Family history:**

People who have a close family member who developed Alzheimer's have a slightly higher risk of developing it themselves - just a slightly higher risk, not a significantly higher risk. Only about 7% of all cases are associated with genes that cause the early onset inherited familial form of the disease. Among those who do inherit the condition, it may start at an earlier age.

### **f. Down's syndrome:**

People with Down's syndrome have an extra copy of chromosome 21, which contains a protein that exists in the brain of people with Alzheimer's. As people with Down's syndrome have a larger amount of this protein than others, their risk of developing the disease is greater.

### **g. Whiplash and head injuries:**

Some studies have identified a link between whiplash and head injuries and a higher risk of developing Alzheimer's.

### **h. Aluminum (UK/Ireland/Australia: Aluminium):**

The link here is a theory which most scientists have discarded. Aluminum exists in the plaques and tangles in the brains of Alzheimer's patients. Some have suggested that aluminum absorption by humans could increase the risk. However, studies have failed to find a link. Aluminum exists in some foods and plants. It is found in some cooking pans, medications and packaging. Scientists doubt there is a link because our bodies absorb minimum amounts and our bodies eliminate it through the urine.

### **i. Gender:**

A higher percentage of women develop Alzheimer's than men. As women live longer than men and Alzheimer's risk grows with age, this may partly explain the reason.

### **j. Atrial fibrillation:**

A study of more than 37,000 patients showed a strong relationship between atrial fibrillation and the development of Alzheimer's disease.

### **k. Heart disease risk-factors:**

People with the risk factors of heart disease - high blood pressure (hypertension), high cholesterol and poorly controlled diabetes - also have a higher risk of developing Alzheimer's. If your high-blood pressure, high cholesterol and or poorly controlled diabetes type 2 is a result of lifestyle, it is called a lifestyle factor. Eating a well balanced diet, doing plenty of exercise, aiming for your ideal body weight and sleeping between 7 to 8 hours each night will probably eliminate these factors. If you cannot eliminate your diabetes II, good diabetes control will help. Sometimes these factors have nothing to do with lifestyle, i.e. if you have high blood pressure for another reason, have diabetes type I, or are susceptible to high blood cholesterol despite being the right weight, exercising, etc. good control and treatment of the condition helps minimize the risk of developing Alzheimer's (and heart disease).

### **l. Academic level:**

There is some data showing a higher risk of developing Alzheimer's among people with lower educational qualifications, compared to highly qualified individuals. However, nobody really knows why.

## Chapter 1: Introduction

### **m. Processed foods and fertilizers (nitrates):**

A study carried out by researchers at Rhode Island Hospital found a significant link between increased levels of nitrates in our environment and food, with increased deaths from diseases, including Alzheimer's, diabetes and Parkinson's. The study looked at progressive increases in human exposure to nitrates, nitrites and nitrosamines through processed and preserved foods as well as fertilizers.

### **Vascular hypothesis:**

Vascular risk factors, such as smoking, obesity and high total cholesterol levels, together with vascular morbidity, such as hypertension, diabetes mellitus and asymptomatic cerebral infarction, are associated with a higher risk of dementia including Alzheimer's disease.

#### **a. Smoking:**

Earlier cross-sectional studies often reported a lower prevalence of AD among smokers compared with nonsmokers.

#### **b. Alcohol:**

It is well recognized that alcohol abuse causes alcohol dementia. Moreover, middle-aged heavy drinkers, especially apoE4 allele carriers, were found to have a more than 3-fold higher risk of dementia and AD later in their lives. On the other hand, the risk of developing dementia and AD was Overweight and obesity Higher BMI in middle age is a risk factor for AD and other dementias.

#### **c. Nutritional factors:**

Several analytical studies showed a decreased risk of AD associated with higher intake of antioxidants such as vitamins E and C, either in the diet or in dietary supplements. However, some studies found a negative effect.**Hypercholesterolemia and statin therapy:**

High total serum cholesterol levels in middle age were found to be a risk factor for the development of AD at a later age. High total cholesterol in middle age is a risk factor for the development of AD and other dementias 20 years later but decreasing serum cholesterol levels in late middle age may be due to ongoing disease processes and may represent a marker for later AD and other dementias.

According to several cross-sectional and case-control studies, the use of statins significantly decreases the prevalence of AD. Whereas an analytical study (the Rotterdam Study) showed that

## Chapter 1: Introduction

the use of statins was associated with a lower risk of AD, other prospective studies found either no beneficial effect or only a slightly decreased risk of AD related to the use of statins. Experimental studies have suggested that statins may decrease the production of beta amyloid both *in vitro* and *in vivo*. Statins also have various other effects that may be beneficial for the CNS and thus may lower the risk of AD.

### **d. Social network and social engagement:**

Longitudinal observational studies suggest that a poor social network or a lack of social engagement is associated with decreased cognitive functions and dementia. The risk of dementia was also higher in elderly persons with increased social isolation and less frequent and unsatisfactory contacts with relatives and friends. Persons with low neuroticism combined with high extraversion had a lower risk of dementia. Low levels of social engagement in late life and decreased social engagement from middle to late life were associated with a two-fold increase in the risk of the development of dementia and AD later in life.

### **e. Physical activity:**

Regular physical exercise is associated with a delay in onset of dementia and AD in the elderly without cognitive impairment. Physical activity in the form of various leisure activities rather than sports or specific physical exercise led to a decrease in the risk of dementia. Even low-intensity physical activity such as walking may lower the risk of dementia and cognitive impairment. A significant protective effect of regular physical activity in middle age, with respect to the development of dementia and AD later in the life, was found especially in persons with the apoE4 allele.

### **f. Mental activity:**

Various activities requiring a mental effort, such as reading, social and cultural activities, knitting, gardening, dancing, tabletop games, playing musical instruments, watching specific TV programs, showed a protective effect against dementia and AD. A study of Swedish twins showed that complexity of work, in particular more complex work with people, may reduce the risk of AD. A recent neuroimaging study suggested that a high level of complex mental activity across the lifespan was correlated with reduced hippocampal atrophy.

In October 2012, researchers from Drexel University College of Medicine in Philadelphia reported in *PLOS ONE* that they discovered a natural anti-cancer mechanism in the human body that may encourage the development of Alzheimer's disease.

### 1.17 Treatment Strategies of AD:

There is currently no cure for AD, however there are multiple drugs that have been proven to slow disease progression and treat symptoms. When initiating treatment for AD patients, physicians divide the symptoms into “cognitive” and “behavioral and psychiatric” categories. The treatment strategies are given below:

#### Cholinesterase inhibitors:

- ✚ Prevent the breakdown of acetylcholine (a-SEA-til-KOH-lean), a chemical messenger important for learning and memory. This supports communication among nerve cells by keeping acetylcholine levels high.
- ✚ Delay worsening of symptoms for 6 to 12 months, on average, for about half the people who take them.
- ✚ Are generally well tolerated. If side effects occur, they commonly include nausea, vomiting, loss of appetite and increased frequency of bowel movements.

The cholinesterase inhibitors are commonly prescribed:

- a. Donepezil (Aricept) is approved to treat all stages of Alzheimer's.
- b. Rivastigmine (Exelon) is approved to treat mild to moderate Alzheimer's.
- c. Galantamine (Razadyne) is approved to treat mild to moderate Alzheimer's.
- d. Tacrine (Cognex) was the first cholinesterase inhibitor approved.

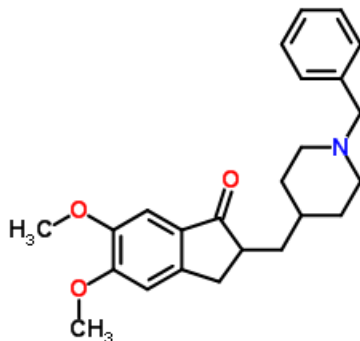
There are currently three cholinesterase inhibitors commonly prescribed: tacrine, donepezil, galantamine, and rivastigmine.

#### a. Donepezil:

Donepezil is a piperidine derivative that reversibly inhibits acetylcholinesterase.<sup>[62]</sup> It is often regarded as providing only symptomatic relief without providing neuroprotective effects. However, *in vitro* studies show that donepezil offers neuroprotection by reducing glutamate excitotoxicity, diminishing  $\beta$ A toxicity and consequently increasing cell longevity. It slowed atrophy of the hippocampus in humans, which suggest a neuroprotective effect. It is very well absorbed after oral administration and reaches peak plasmatic concentration ( $C_{max}$ ) in 3-4 hours. Elimination half-life of donepezil is approximately 70 hours allowing once daily administration. It binds to plasma proteins in a proportion of 96% and is metabolized by isoenzyme 2D6 and 3A4 of cytochrome P450. Starting and minimal effective dose is 5 mg once daily. Maximal recommended dose is 10 mg daily. Overall, both the doses of 5 mg and 10 mg were beneficial,

## Chapter 1: Introduction

with the higher dose being marginally more effective. More side effects were reported with donepezil than with placebo. Most common side-effects were nausea, vomiting, diarrhoea, muscle cramps, dizziness, fatigue and anorexia and they were dose-dependent.<sup>[63,64,65]</sup>

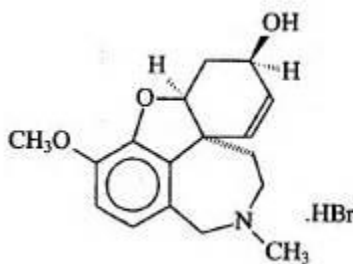


**Fig. 1.11: Donepezil (Chemical Structure).**

### **b. Galantamine:**

Galantamine is a tertiary alkaloid agent that reversibly inhibits AChE. Galantamine, a natural AChEI (originally derived from the common snowdrop and other plants, but now synthesized), protects neurons and reduced cell death by modulating nicotinic receptors, which are significantly reduced in AD brains. In an animal model, galantamine also increased dopaminergic neurotransmission in the hippocampus, a brain area particularly important in memory.

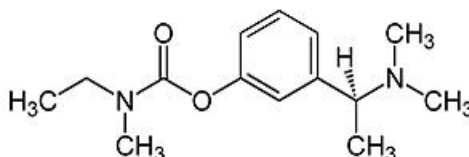
Galantamine is rapidly absorbed after oral administration and reaches  $C_{max}$  in approximately 1 hour. Elimination half-life is between 7 to 8 hours. It binds to plasma proteins in a proportion of 18% and is metabolized by isoenzyme 2D6 and 3A4 of cytochrome P<sub>450</sub>. Galantamine is commercialized as an extended-release formulation allowing once-daily dosing. Starting dose of galantamine ER is 8 mg once daily. Minimal effective dose is 16 mg daily and maximal dose is 24 mg daily. Galantamine's side effects are comparable to other ChEI's and consist mainly of cholinergic gastrointestinal symptoms.



**Fig. 1.12: Galantamine (Chemical structure).**

### c. Rivastigmine:

Rivastigmine is a carbamate derivative that reversibly inhibits both acetyl- (AChE) and butyryl- (BuChE) cholinesterase. It is the only ChEI with significant inhibition of BuChE. Butyrylcholinesterase is widely distributed in the central nervous system and may play a role in cholinergic function and neurodegeneration. It is unclear how specific BuChE inhibition relates to rivastigmine's clinical effect.



**Fig. 1.13: Rivastigmine (Chemical structure).**

Rivastigmine is well absorbed after oral administration and reaches  $C_{max}$  in one hour. Its elimination half-life is approximately 1 to 2 hours. It binds to proteins in a proportion of 40%, is hydrolysed by esterases (including cholinesterases) and is excreted in the urine. Cytochrome P<sub>450</sub> isoenzymes are not involved in the metabolism of rivastigmine hence minimizing drug-drug interactions. Starting dose of rivastigmine is 1.5 mg twice a day and can be gradually titrated to the maximal dose of 6 mg twice a day. The minimal effective dose is 3mg twice a day. A transdermal form of rivastigmine has been developed and is available on most markets since 2008.<sup>[71]</sup> The main objective of transdermal rivastigmine is to allow titration to the highest (and most therapeutic) doses of the medication while minimizing side effects. This is achieved by

## Chapter 1: Introduction

slow release of the medication into the circulation as demonstrated by a  $C_{\max}$  of 8 hours by transdermal route. Starting dose of transdermal rivastigmine is 5  $\text{cm}^2$  and the effective and maximal dose is 10  $\text{cm}^2$ . More side-effects were reported with rivastigmine than with placebo and they were dose-dependent. Most common side effects were nausea, vomiting, diarrhoea, anorexia, headache, syncope, abdominal pain and dizziness.

### **d. NMDA antagonist (Memantine):**

Memantine is thought to reduce cell damage by reducing excitotoxicity resulting from over activation of NMDA glutamate receptor during synaptic transmission.

In addition to cholinesterase inhibitors, memantine has also been approved for the treatment of AD. Memantine regulates the activity of glutamate in the brain. Glutamate is an excitatory neurotransmitter involved in learning and memory. Over stimulation of nerves by glutamate may be the cause of the neuron degeneration seen in AD, called Bethune 16 excitotoxicity. Glutamate binds to N-methyl-D-aspartate (NMDA) receptors on the surface of brain cells. Memantine functions by blocking the NMDA receptors and therefore protecting the nerves from excessive glutamate stimulation.

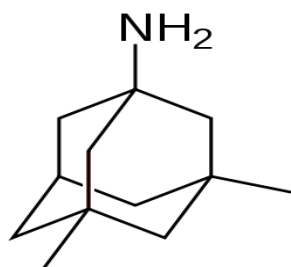


Fig. 1.14: Memantine (chemical structure)

Memantine is indicated in the treatment of moderate to severe AD and can temporarily delay worsening of cognitive symptoms. It is well absorbed after oral administration and reaches  $C_{\max}$  in 3 to 8 hours. Elimination half-life is 60-80 hours. It binds to proteins in a proportion of 45% and is almost completely excreted unchanged in the urine. Starting dose is 5 mg daily (in one or two doses). Minimal therapeutic dose is 10 mg daily and maximal dose is 20 mg daily. NMDA antagonists, such as memantine, have generally been regarded as neuroprotective, but they have



## Chapter 1: Introduction

also demonstrated neurotoxic properties that diminish memory, incite neuron death and even produce psychotic episodes in humans.

### **Antihypertensive drugs:**

Antihypertensive drugs have potential for AD therapy. ACE inhibitors reduce inflammation and mental decline in AD patients by 50%. Mild to moderate AD subjects with high blood pressure had less cognitive decline when given an ACE inhibitor that cross the BBB than when given an ACE inhibitor that did not or a Calcium channel blocker.

A recent study has confirmed that ACE inhibitors slow the progression of AD. A potential downside of ACE inhibitors is that they may block ACE from converting  $\beta A_{1-42}$  to less damaging  $\beta A_{1-40}$ , thereby reducing its protective function.

Possible mechanism by which ACE inhibitors work, include reducing angiotensin II, increasing an enzyme that break  $\beta A$  and increasing acetylcholine.

Calcium channel blockers are another category of antihypertensive drugs. It may be that  $\beta A$ , mutation in presenilin proteins or other factors open channels that permit  $Ca^{2+}$  to enter the damage cell.<sup>[78,79,80]</sup>

### **Anti-inflammatory drugs:**

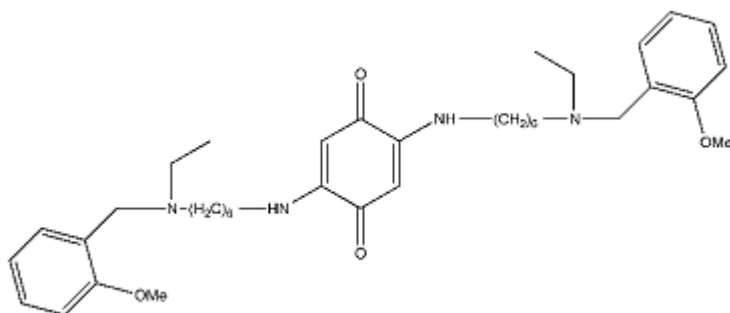
Most research on NSAIDs has focused on prevention rather than treatment of AD. One study has examined 49,349 NSAID user for five years found the risk of AD was clearly reduced by ibuprofen and less so by indomethacin, while salicylate provides no protection.

### **Secretase inhibitors:**

Secretase are the enzymes that break the APP, found in cell membranes, into  $\beta A$  fragments that form plaques. Secretase inhibitors should slow the production of  $\beta A$ . A gamma-secretase inhibitor has been shown to reduce plasma  $\beta A$  about 60 percent in a small 14 week study of mild to moderate AD patients.

B-secretase inhibitors have been shown to reduce  $\beta A$  in animal models and may have fewer adverse effects. Memoquin is a  $\beta$ -secretase inhibitor that also inhibits AChE, reduces  $\beta A$  production, limits tau hyperphosphorylation and fights oxidation, but it is in the early developmental stage.

## Chapter 1: Introduction

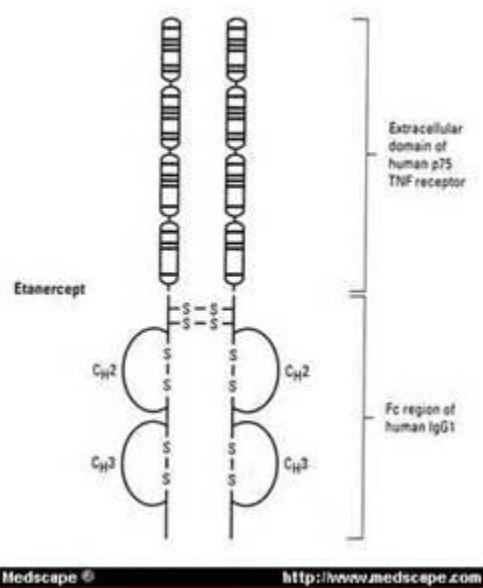


**Fig. 1.15: Memoquin (Chemical Structure).**

### Insulin:

Insulin has many roles in normal cell function. Nasal administration of insulin improved several cognitive measures in subjects with early AD or mild cognitive impairment. Insulin resistance can affect the brain as well as other organs, making it difficult for the brain cells to acquire energy for cell maintenance and synaptic connections, thus cell death can occur. Also hyperinsulinemia has been found to increase inflammation and  $\beta A_{1-42}$  in healthy adults.

### Etanercept:



Etanercept has recently generated interest because it produced dramatic cognitive improvement. AD brain have elevated levels of the cytokines  $TNF-\alpha$ . Since  $TNF-\alpha$  regulates neural transmission, lowering by spinal injections of etanercept might restore the brain to more normal functioning. A dramatic cognitive improvement was evidenced in one moderate to severe AD subject within minutes.

## Chapter 1: Introduction

### Brain Derived Neurotrophic factor (BDNF):

BDNF is a protein produced in the brain that help existing neuron survive, facilitate the growth of new neuron and synaps and reverses neuronal atrophy and behavior deficits; intracellular signalling is also facilitated. BDNF is active in the hippocampus and cortex. It stimulates neurogenesis. BDNF level decline with age and are lower in the AD brains than in those without AD.

### Immunization:

$\beta$ A has been reduced by injecting AD patients with a synthetic form of  $\beta$ Z called AN1792. Although this reduces  $\beta$ A, the effect on AD is unclear. Some people respond to immunization without a showing of disease progression even after 4.6 years.

### Antipsychotics and sedatives:

Antipsychotics and sedatives have accelerated the progression of AD, defines as an increase of one or more points in the Global deterioration Scale, and produced a 50% decrease in cortical plasticity in cats. Thus care should be exercised in using such drugs for AD patients.

### Flavanoids and other novel plant constituents:

#### a. HuperzineA (HupA):

HupA is an extract from the chinese moss *Huperzia serrata* that has been used for centuries in Chinese folk medicine to treat wide range of diseases.

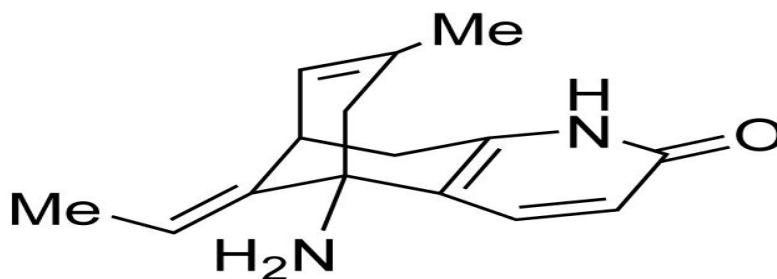


Fig. 1.17: Huperzine (Chemical Structure)

A review of in vitro studies found HupA preserves Ach longer than Tacrine, Galantamine or Donepezil. HupA reduces  $\beta$ A induced neuronal degeneration in the hippocampus and the cortex, decrease oxidative damage from free radical induced  $\beta$ A plaque, protects neuron from cytotoxins and apoptosis induced by  $\beta$ A and free radicals and inhibit glutamate toxicity.

### b. Polyphenols:

Polyphenols are a group of plant-derived chemical compounds with more than one phenol unit. They protect the plant from stress induced by ultraviolet radiation, disease, pests and physical damage. Polyphenols also protect animals by activating a number of intracellular processes that preserve neurons.

### c. Curcumin:

Curcumin is extracted from the plant *Curcuma longa* (turmeric). It may provide promising therapy for AD because it has at least 10 neuroprotective properties including anti-inflammatory, antioxidant, inhibition of  $\beta$ A formation, clearance of  $\beta$ A formation and copper and iron chelation.

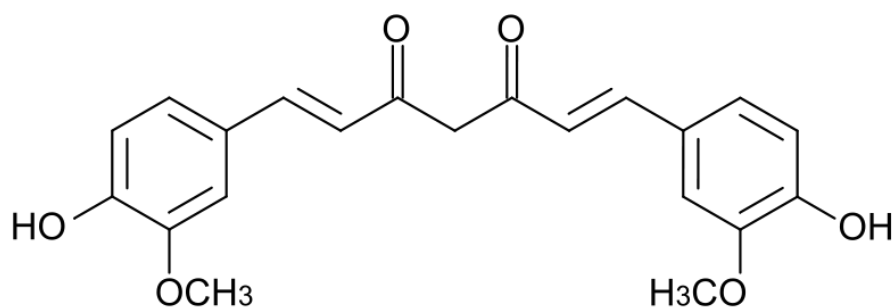
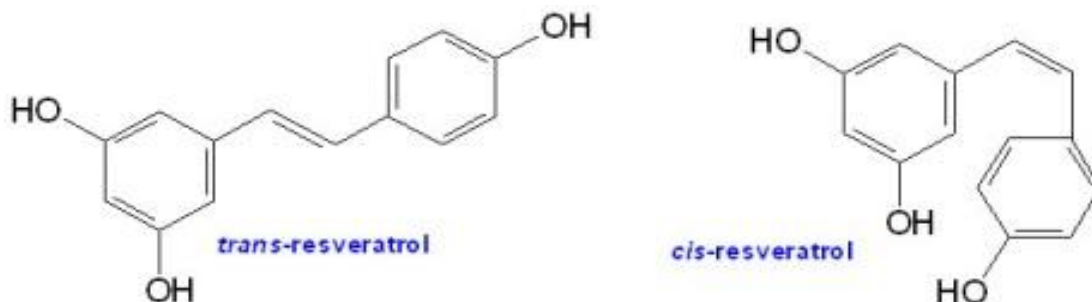


Fig. 1.18: Curcumin (Chemical Structure)

### d. Resveratrol:

Resveratrol is a polyphenol found in red wine, peanuts and other plants which reduce oxidative stress, decrease inflammation, reduce  $\beta$ A formation, protect DNA, decrease cell death and modulates various other systems that protect cells. Animal models suggest that resveratrol mimics the effect of caloric restriction on longevity and negates the harmful effects of high fat diet, doubles resistance to muscle fatigue, reduce neurotoxicity, decrease cell death, decrease degeneration of the hippocampus and prevents learning impairments. Several studies have shown that moderate consumption of red wine reduces the risk of developing AD.

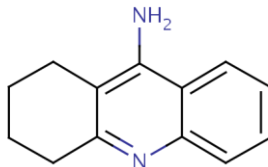


## Chapter 1: Introduction

**Fig. 1.19: Reveratrol (Chemical structure)**

**e. Tacrine (Cognex):**

Tacrine was the first cholinesterase inhibitor approved. Doctors rarely prescribe it today because it's associated with more serious side effects than the other three drugs in this class.



**Fig. 1.20: Tacrine (Chemical structure).**

**Herbal supplement:**

**a. Gingko Biloba:**

Gingko Biloba contains compounds that have antioxidant and antiinflammatory properties that protect neuron membrane, regulate neurotransmitters and retard cell degeneration. Gingko Biloba extract contains Rgb 761 that reduce  $\beta$ A and cell death.

**b. Panax ginseng:**

Panax ginseng has been studied for its effect of cognition. The active component in ginseng are thought to be steroid like compounds called ginsenosides. Ginsenosides Rg3 reduced  $\beta$ A<sub>1-42</sub> by 84% invitro and 31% invivo.

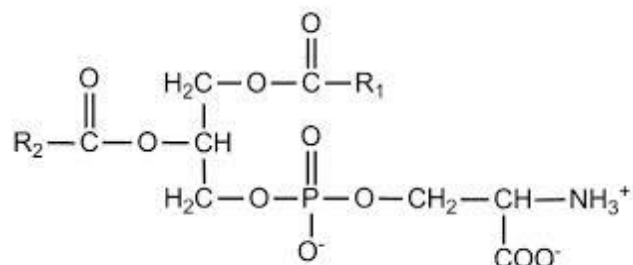
**c. Withania sominifera:**

Withania sominifera, a small evergreen hruv commonly called ashwagandha has been used to treat many diseases. A recent study have been shown that it have many neuroprotective properties including anti-inflammatory, antioxidant, inhibition of  $\beta$ A, inhibition of Calcium, inhibition of AChE and reduction of cell death. In vitro research demonstrates that it regenerate damaged axons, dendrites and synaps.

**Nutrients:**

**a. Posphatidylserine:**

In-vitro Assessment of Cholinesterase Inhibitory  
ex:



## Chapter 1: Introduction

Phosphatidylserine is important in neurotransmission, mitochondrial function and cell metabolism. It has also been implicated in the enhancement of nerve growth factor. Recent research demonstrate that Phosphatidylserine increases Ach and provides neuroprotection by inhibiting  $\beta$ A and inflammation.

**Fig. 1.21: Phosphatidylserine**

### b. Alpha-Lipoic acid (ALA):

ALA is a fatty acid found in all cells and in some food. It is a powerful antioxidant that readily penetrates the blood brain barrier, chelate metals, reduce inflammation and increase ACh.



**Fig. 1.22: Alpha-Lipoic Acid (Chemical Structure)**

### c. Omega-3 Fatty Acids:

Omega-3 Fatty Acids have many beneficial effects that make them interesting prospects of AD. Daily taking of Omega-3 Fatty Acids reduces the risks of developing AD. It has also beneficial effects on mild to moderate AD.

### d. Acetyl L-Carnitine (ALCAR):

ALCAR derived from amino acid L-carnitine, work synergistically with ALA to transport acyl groups and fatty acids into the mitochondria for energy production. IT is a small molecule that readily penetrates the BBB and promotes biosynthesis of Ach. It also clears the toxic fatty acid metabolites. ALCAR also increases nerve growth factors.

### e. Coenzyme Q10:

Coenzyme Q10 is essential for mitochondrial energy production. Many mitochondrial dysfunction occurs in AD brains, including disruption of energy production, apoptosis deregulation, altered calcium homeostasis and others. Coenzyme Q10 reduced oxidative stress and tau pathology in mice and metabolized  $\beta$ A and inhibited its formation invitro.

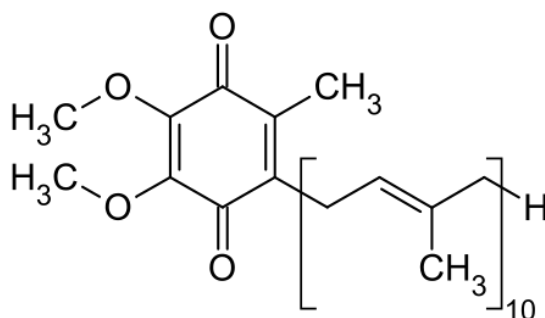


Fig. 1.23: Coenzyme Q-10

## Vitamins and mineals:

### a. B vitamins:

Low level of vitamin B12 and folate appear to be associated with an increased rate of cognition decline. Since AD patients typically have high levels of homocysteine, researchers have examined the possibility that lowering homocysteine would be therapeutic. A combination of B12 and B6 and folate lowered homocysteine level in mild to moderate AD.

### b. Vitamin A:

Vitamin A is essential for learning, memory and cognition. Vitamin A level decline with age and lower still in individuals with AD. A derivative of vitamin A, retinoic acid is known to slow cell death and offer protection from  $\beta$ A.

### c. Vitamin E:

Doctors sometimes prescribe vitamin E to treat cognitive Alzheimer's symptoms. No one should take vitamin E to treat Alzheimer's disease except under the supervision of a physician. Vitamin E is an antioxidant, a substance that may protect brain cells and other body tissues from certain kinds of chemical wear and tear. Its use in Alzheimer's disease is based chiefly on a 1997 study showing that high doses delayed loss of ability to carry out daily activities and placement in residential care for several months. That study was conducted by the Alzheimer's Disease Cooperative Study (ADCS), the clinical research consortium of the National Institute on Aging (NIA). Since the ADCS study was carried out, scientists have found evidence in other studies that high dose vitamin E may slightly increase the risk of death, especially for those with coronary artery disease. No one should take vitamin E to treat Alzheimer's disease except under the supervision of a physician. Vitamin E especially at the high doses used in the ADCS study can negatively interact with other medications, including those prescribed to keep blood from clotting or to lower cholesterol.

### d. Lithium:

Lithium is a naturally occurring mineral found in small amounts in many food. It increases the neuroprotective proteins called BCL-2 in the rat hippocampus and frontal cortex and inhibits glycogen synthase kinase 3  $\beta$ , which is implicated in increasing levels of phosphorylated tau and is thought to be a factor leading to  $\beta$ A plaques and cell death. An in vitro study found lithium's neuroprotection and resulted from inhibiting  $\text{Ca}^{2+}$  influx mediated by NMDA receptors.

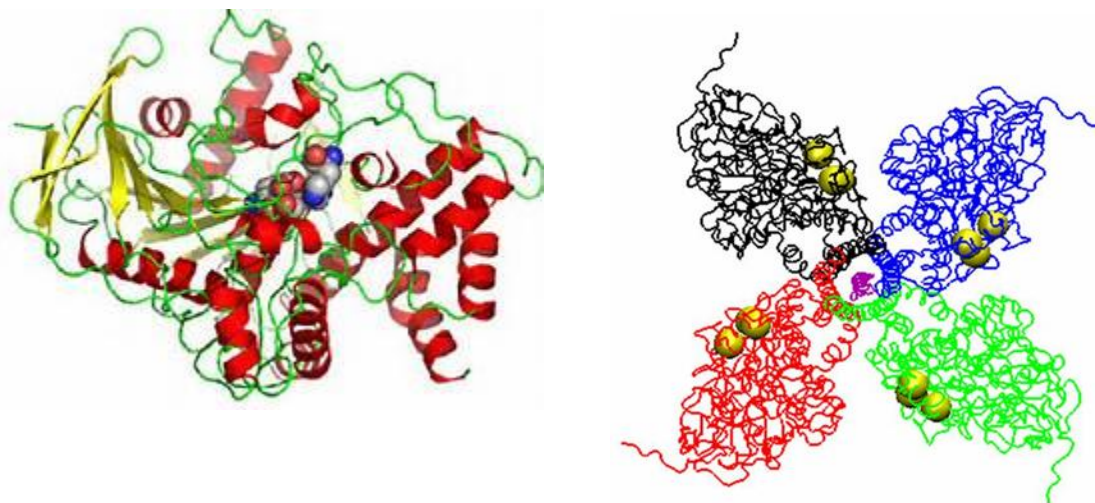
### Hormones (Melatonin):

Melatonin is a naturally occurring hormone that is produced in decreasing amounts with age. It is a powerful antioxidant, provides mitochondrial support, protects against tau tangles and  $\beta$ A toxicity. It readily crosses the BBB and enters all cell structures.

## 1.18 Cholinesterase and their mechanism:

### Acetylcholinesterase:

Acetylcholinesterase (AChE) is a key enzyme in the nervous system of animals. It is a hydrolase that hydrolyzes the neurotransmitter acetylcholine. AChE is found at mainly neuromuscular junctions and cholinergic brain synapses, where its activity serves to terminate synaptic transmission. It belongs to the carboxylesterase family of enzymes. It is the primary target of inhibition by organophosphorus compounds such as nerve agents and pesticides.





## Chapter 1: Introduction

(a)

(b)

**Fig. 1.24: (a) 3D structure of AChE, (b) Tetramer of AChE**

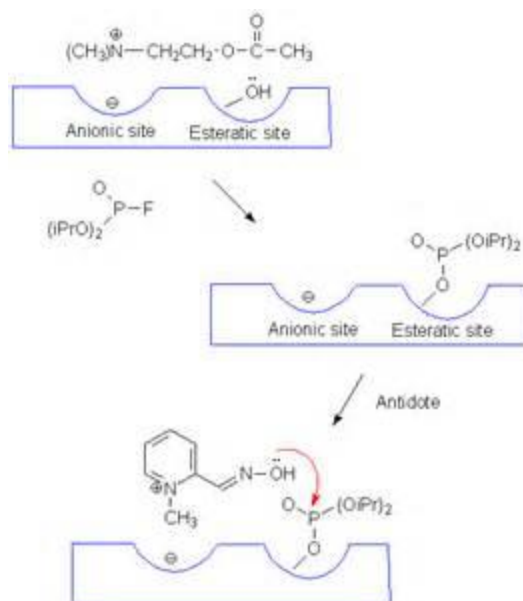
### **Enzyme structure and mechanism:**

AChE has a very high catalytic activity - each molecule of AChE degrades about 25000 molecules of acetylcholine (ACh) per second, approaching the limit allowed by diffusion of the substrate. The active site of AChE comprises 2 subsites - the anionic site and the esteratic subsite. The structure and mechanism of action of AChE have been elucidated from the crystal structure of the enzyme.

The anionic subsite accommodates the positive quaternary amine of acetylcholine as well as other cationic substrates and inhibitor. The cationic substrates are not bound by a negatively-charged amino acid in the anionic site, but by interaction of 14 aromatic residues that line the gorge leading to the active site. All 14 amino acids in the aromatic gorge are highly conserved across different species. Among the aromatic amino acids, tryptophan 84 is critical and its substitution with alanine results in a 3000-fold decrease in reactivity. The gorge penetrates half way through the enzyme and is approximately 20 angstroms long. The active site is located 4 angstroms from the bottom of the molecule.

The esteratic subsite, where acetylcholine is hydrolyzed to acetate and choline, contains the catalytic triad of three amino acids: serine 200, histidine 440 and glutamate 327. These three amino acids are similar to the triad in other serine proteases except that the glutamate is the third member rather than aspartate. Moreover, the triad is of opposite chirality to that of other proteases. The hydrolysis reaction of the carboxyl ester leads to the formation of an acyl-enzyme and free choline. Then, the acyl-enzyme undergoes nucleophilic attack by a water molecule, assisted by the histidine 440 group, liberating acetic acid and regenerating the free enzyme.

## Chapter 1: Introduction



**Fig. 1.25: Mechanism of action of AChE**

### Distribution of AChE:

AChE is found in many types of conducting tissue: nerve and muscle, central and peripheral tissues, motor and sensory fibers, and cholinergic and noncholinergic fibers. The activity of AChE is higher in motor neurons than in sensory neurons.

Acetylcholinesterase is also found on the red blood cell membranes, where different forms constitute the Yt blood group antigens. Acetylcholinesterase exists in multiple molecular forms, which possess similar catalytic properties, but differ in their oligomeric assembly and mode of attachment to the cell surface.

### Biological function of AChE:

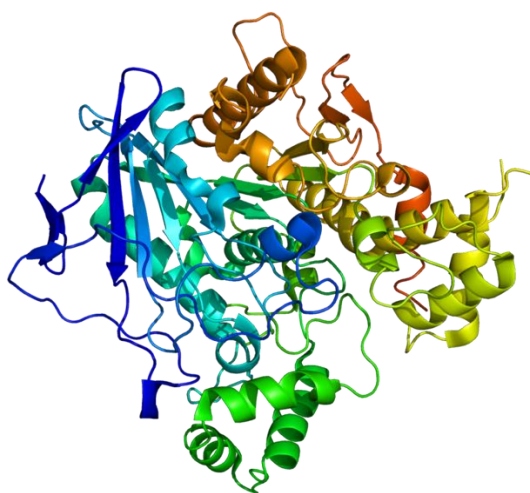
During neurotransmission, ACh is released from the nerve into the synaptic cleft and binds to ACh receptors on the post-synaptic membrane, relaying the signal from the nerve. AChE, also located on the post-synaptic membrane, terminates the signal transmission by hydrolyzing ACh. The liberated choline is taken up again by the pre-synaptic nerve and ACh is synthesized by combining with acetyl-CoA through the action of choline acetyltransferase.

### **Butyrylcholinesterase enzyme:**

Butyrylcholinesterase is a non-specific cholinesterase enzyme that hydrolyses many different choline esters. It is also known as pseudocholinesterase or plasma cholinesterase. In humans, it is found primarily in the liver and is encoded by the *BCHE* gene.

It is very similar to the neuronal acetylcholinesterase, which is also known as AChE or erythrocyte cholinesterase. The term "serum cholinesterase" is generally used in reference to a clinical test that reflects levels of both of these enzymes in the blood.

Assay of butyrylcholinesterase activity in plasma can be used as a liver function test as both hypercholinesterasemia and hypocholinesterasemia indicate pathological processes.



**Fig. 1.26: 3D structure of Butyrylcholinesterase.**

### **Enzyme Kinetics:**

Enzyme kinetics is the study of the chemical reactions that are catalyzed by enzyme. In enzyme kinetics, the reaction rate is measured and the effects of varying the conditions of the reaction are investigated. Studying an enzyme's kinetics in this way can reveal the catalytic mechanism of this enzyme, its role in metabolism, how its activity is controlled, and how a drug or an agonist might inhibit the enzyme.

Enzymes are usually protein molecules that manipulate other molecules, like the enzymes substrates. These target molecules bind to an enzyme's active site and are transformed into products through a series of steps known as the enzymatic mechanism. These mechanisms can be divided into single-substrate and multiple-substrate mechanisms. Kinetic studies on enzymes that only bind one substrate, such as triosephosphate isomerase, aim to measure the affinity with which the enzyme binds this substrate and the turnover rate. Some other examples of enzymes are phosphofructokinase and hexokinase, both of which are important for cellular respiration (glycolysis).

### 1.19 Side Effects of the AD Drugs:

Although, acetylcholinesterase inhibitors are widely used for the treatment of AD, the benefit of cholinesterase inhibitors do not come without unpleasant side effects. The side effects of currently used drugs for AD treatment are given in the table 1.3.

**Table 1.4: Side Effects of the AD Drugs**

Generic	Side Effects
<b>Donepezil</b>	Nausea, vomiting, dizziness, loss of appetite, weight loss, muscle cramps, tiredness, trouble sleeping and increased frequency of bowel movements.
<b>Galantamine</b>	Nausea, vomiting, loss of appetite and increased frequency of bowel movements.
<b>Memantine</b>	Headache, constipation, confusion and dizziness, drowsiness, headache, insomnia, agitation and hallucination.
<b>Rivastigmine</b>	Nausea, vomiting, loss of appetite and increased frequency of bowel movements.
<b>Tacrine</b>	Possible liver damage, nausea, emesis, diarrhea, vomiting, dyspepsia, rhinitis, myalgia, tremor and excessive urination.
<b>Vitamin E</b>	Can interact with medications prescribed to lower cholesterol or prevent blood clots; may slightly increase risk of death.

### Historical background of Herbal drugs:

Herbal products have been traditionally used as therapeutic agents and dietary supplement in both Eastern and Western cultures. The use of medicinal plants has substantially increased in the last decades and a World Health Organization survey indicated that 70-80% of the world population still relies on herbal based traditional medicine for their primary healthcare. Nature has a cure for all kinds of diseases and dilemmas that occur in people. It is the largest storehouse that includes everything for human survival from the enormous natural resources. The plants are being used for therapeutic purposes since the dawn of civilization. For thousands of years, natural products have played an important role throughout the world in treating and preventing human diseases. Natural product medicines have come from various source materials including terrestrial plants, terrestrial microorganisms, marine organisms and terrestrial vertebrates. The value of natural products in this regard can be assessed using 3 criteria:

## Chapter 1: Introduction

- The rate of introduction of new chemical entities of wide structural diversity, including serving as templates for semi synthetic and total synthetic modification.
- The number of diseases treated or prevented by these substances and
- Their frequency of use in the treatment of disease.

An analysis of the origin of the drugs developed between 1981 and 2002 showed that natural products or natural product-derived drugs comprised 28% of all new chemical entities (NCEs) launched onto the market. In addition, 24% of these NCEs were synthetic or natural mimic compounds, based on the study of pharmacophores related to natural products.

This combined percentage (52% of all NCEs) suggests that natural products are important sources for new drugs and are also good lead compounds suitable for further modification during drug development. The large proportion of natural products in drug discovery has stemmed from the diverse structures and the intricate carbon skeletons of natural products. Since secondary metabolites from natural sources have been elaborated within living systems, they are often perceived as showing more “drug-likeness and biological friendliness than totally synthetic molecules” making them good candidates for further drug development.

Scrutiny of medical indications by source of compounds has demonstrated that natural products and related drugs are used to treat 87% of all categorized human diseases (48/55), including as antibacterial, anticancer, anticoagulant, antiparasitic and immunosuppressant agents, among others. There was no introduction of any natural products or related drugs for 7 drug categories (anesthetic, antianginal, anti histamine, anxiolytic, chelator and antidote, diuretic, and hypnotic) during 1981 to 2002. In the case of antibacterial agents, natural products have made significant contributions as either direct treatments or templates for synthetic modification. Of the 90 drugs of that type that became commercially available in the United States or were approved worldwide from 1982 to 2002, ~79% can be traced to a natural product origin.

Frequency of use of natural products in the treatment and/or prevention of disease can be measured by the number and/or economic value of prescriptions, from which the extent of preference and/or effectiveness of drugs can be estimated indirectly. According to a study by Grifo and colleagues, 84 of a representative 150 prescription drugs in the United States fell into the category of natural products and related drugs. They were prescribed predominantly as anti-allergy/pulmonary/ respiratory agents, analgesics, cardiovascular drugs, and for infectious diseases. Another study found that natural products or related substances accounted for 40%, 24%, and 26%, respectively, of the top 35 worldwide ethical drug sales from 2000, 2001, and 2002.

### 1.21 Plants as a source of AD drugs:

None of the pharmacological lines of intervention have so far been able to stop the progression of AD; thus a need for an alternative approach was believed necessary to make progress with particular emphasis on plants. Plants have been used since antiquity in traditional medicinal systems for the treatment of memory dysfunction. Studies carried out on some species have resulted in the identification of compounds which are currently either in clinical use or templates for further drug discovery, e.g. galantamine, an alkaloid isolated from *Galanthus nivalis* L. (Amaryllidaceae). Galantamine was approved by the FDA in 2004 for use as an acetylcholinesterase inhibitor in the treatment of AD. It was the traditional use of *G. nivalis* L. in Bulgaria and Turkey for neurological conditions that led to the development of this drug.

There have been previous reviews on the plants demonstrating pharmacological and clinical effects of potential interest in AD therapy, including Clement *et al.*, (2003), Howes and Houghton (2003), Howes *et al.*, (2003) and Zhang (2006). By studying the reviews it becomes clear that ethopharmacological screening is one of the main approaches used in drug discovery.

## Chapter 2: Plant and Literature Review

### 2.1 Solanum Plant:

*Solanum* is a large and diverse genus of flowering plants. *Solanum* species show a wide range of growing habits, such as annual and perennials, vines, subshrubs, shrubs, and small trees. The genus today contains roughly 1,500–2,000 species. Poisonings associated with certain species of *Solanum* are not uncommon and may be fatal. However, several species are locally used in folk medicine, particularly by native peoples who have long employed them.

### 2.2 The Scientific Classification of *Solanum indicum*:

Domain	Eukaryota
Kingdom	Plantae
Phylum	Spermatophyta
Subphylum	Angiospermae
Class	Dicotyledonae
Order	Solanales
Family	Solanaceae
Genus	<i>Solanum</i>
Species	<i>Solanum indicum</i>

### 2.3 Plant Physiology:

*Solanum indicum* is xeric in nature and can be found growing in waste places, roadsides, moist and shady places. It is also found mostly throughout warmer parts of any area. It is a stiff, much-branched, prickly shrub growing up to a height of 0.3–1.5 m. Trunk is purple, trifling with numerous branches.

The Leaves are simple, sinuate, base obliquely truncate, thick chartaceous, prickly along the midrib and softly tomentose and measure about 5–15 cm × 2.5–7.5 cm. The branches are covered with minute stellate brown hairs. Prickles are sharp, often slightly recurved, short hooked, and have a broad compressed base.

## Chapter 2: Plant and Literature Review



Figure 2.1 : *Solanum indicum* plant

Flowers are in extra-axillary 8 – 10-flowered racemes. Pedicels are 6–13 mm long, stellately hairy, and prickly. Calyx is 3 mm long, prickly and 5-lobed. Corolla is about 8 mm long, bluish, purple, rotate; lobes 5. Stamens are 5.

Fruit is globose berry, green with white lining when young and becomes yellow when ripe. Seeds are small, many, and discoid.

- Flowering occurs in September–October.
- Fruiting begin to appear in October.
- Part(s) used for medicinal purpose: Whole plant, especially roots and fruits
- Plant type / Growth Habit: Shrub
- Duration: Perennial / Annual
- Distribution: Throughout the tropical and subtropical India. Also occurs in Sri Lanka, Malaysia, China, Philippine Islands and Africa.
- 

In-vitro Assessment of Cholinesterase Inhibitory and Antioxidant Activity of *Solanum indicum* plant extracts





Figure 2.2: *Solanum indicum* flower and fruit

- Habitat: Warmer parts of the country upto an elevation of 1500 m on waysides and waste places in plains
- Climate and soil: Plant requires warm tropical environment and an annual rainfall of 1000 mm to 1500 mm. Soil required is Sandy loam.
- Propagation: From Seeds (bimbima.com., 2017)

### 2.4 Geography of *Solanum indicum*:

The plant is native to South Asia and was domesticated in India. It was brought to the Iranian lands at a very early but indeterminable date. In ancient times Iranian and Arab sailors carried it to East Africa, as shown by the presence of a number of specific terms for it in Ethiopia. It did not reach the Eastern Mediterranean lands, however, until a relatively late period, probably after the Arab conquest of Iran.

### 2.5 Chemical Constituents of *Solanum indicum*:

Leaves and roots contain the steroidal alkaloids, solanine, solanidine and solasodine. Seed Oil contains of glycerides of lauric, palmitic, stearic, arachidic, oleic, linoleic acids together with phytosterols, sitosterol and carpesterol. The fruit contains carbohydrates which hydrolyze into maltose, melibiose, sucrose, raffinose, steroidal alkaloids, enzymes and is a source material for cortisone and sex hormone preparations. (bibima.com., 2017)

### 2.6 Medicinal Uses of *Solanum indicum*:

*Solanum indicum* is an important medicinal plant and extensively used in Ayurveda.

- Roots are diaphoretic, diuretic, expectorant, stimulant. The root is used against bronchites, itches and for bodyaches, for asthma and to cure wounds.
- The seeds are used to treat toothache.
- The berries are injurious to children but are often eaten by adults with impunity, especially when quite ripe as the poisonous principle is chiefly associated with all green parts.
- It is applied in medicine similarly to bittersweet but is more powerful and possesses greater narcotic properties. The leaves are placed in the cradles of infants to promote sleep.
- It is useful in cutaneous disorders.
- Their juice has been used for ringworm, gout and earache and when mixed with vinegar, is considered to be good for gargle and mouthwash.
- Half-ripe fruits are employed in the preparation of curries, chutneys and preserves. A decoction of root is prescribed as a tonic and also used in difficult parturition.
- In Alopecia The juice of Brihati fruit, mixed with honey, is applied externally. (motherherbs.com., 2017)

## Chapter 2: Plant and Literature Review

### 2.7 Literature Review:

1. Bahgat A et. Al. found that extract from *Solanum indicum* ssp. *Distichum* is effective against L-NAME-induced hypertension in rats. That finding supported further development of the extract as a potentially therapeutically useful antihypertensive agent. (Bahgat A et. al., 2008)
2. J. Kotoky et. al. found that the chloroform extract of *Solanum indicum* is highly active against five different dermatophytic fungi viz., *Microsporum gypseum*, *Microsporum fulvum*, *Trichophyton mentagrophytes*, *Trichophyton rubrum*, *Trichophyton tonsurans*. The water extract was found completely inactive against *T. mentagrophytes* and *T. rubrum*. But it showed a little activity against *M. gypseum*, *t. tonsurans* and *M. fulvum*. Their results suggested that the leaves of *Solanum indicum* may possess some non-polar anti-fungal compounds that can be used for treating dermatophytes. (Kotoky J. et. al., 2012)\
3. C. C. Gavinath et. al. found that the fresh leaves of *Solanum indicum* show moderate anti-bacterial activity when used with methanol and ethanol against *Bacillus* ssp., *Cornebacterium diptheriae*, *streptococcus* ssp., *Pseudomonas* ssp. And *Salmonella typhimorium*. (Gavinath C. C. et. al., 2012)
4. During ripening stages, *Solanum indicum* L. presents different colors (green, yellow, red). N. D. Denis et. al. found that the red berries showed a higher content of carotenoids compared to green and yellow ones. Regarding polyphenols, several phenolic acids and flavanoids were found in all berries. The content of caffeoylquinic acids, caffeic acid, flavanol glycosides and naringenin wa higher in red berries. They have also found that the content of p-coumaric acid and feruloylquinic acids was similar among the three colors. Their research showed the importance of the ripening stage in increasing the anti oxidant content of berries from *Solanum indicum*. (Denis N. D. al., 2010)
5. V. D. Guiama et. al. found that extract from nine *Solanum* species has proteolytic and milk clotting activity. *Solanum indicum* is one of them. (Guiama V. D. et. al., 2010)
6. K. Shil found that fruit of *Solanum indicum* can be used as a source of minerals. After investigation, the researcher found that iron and phosphorus have a very rich quantity than the calcium in its fruits. (Shil k., 2013)
7. R. U. Hasan et. al. found that the crude aqueous and ethanolic extract of *Solanum indicum* fruits is a potential source of natural anti-oxidants. The ethanolic extract showed both the highest antioxidant activity and phenolic contents than aqueous extract. (Hasan R. U. et. al., 2013)

## Chapter 2: Plant and Literature Review

8. W.J. Syu et. al. found cytotoxic and novel compounds from *Solanum indicum*. They isolated Solavetivone, cytotoxic to OVCAR-3 cells with an IC<sub>50</sub> value of 0.1 mM. A novel solafuranone and three known compounds, scopoletin, N-(p-trans-coumaroyl) tyramine and N-trans-feruloyltyramine, were isolated from the plant. (Syu W. J. et. al., 2001)
9. P. K. Deb et. al. found that methanolic extract of *Solanum indicum* Linn. Fruit possess pharmacological activity which satisfies the claim of traditional medicinal uses. They found that the crude methanolic extract of the dried fruits of *Solanum indicum* Linn. Exhibited significant analgesic, anti-pyretic and CNS depressant activity. (Deb P. K. et. al., 2014)
10. I. A. Kouadio et. al found that the antimicrobial fraction of *Solanum indicum* L. berries could be used as natural substance to prevent infection of plants and crops by bacteria pathogens and also as preservative in food and feeds these berries have been ingested by humans for quite some time without any toxic effect noted. (Kouadio I. A. et. al., 2013)
11. A. Aberoumand found the proximate composition of the fruits of *Solanum indicum* which includes crude fibre (8% wet weight), total carbohydrate (40.67% wet weight), crude protein (23.4% wet weight), total ash (22.66% wet weight), crude fat (5.26% wet weight), and caloric value of (303.9 wet weight). The phytochemical screening revealed the presence of alkaloids, polyphenols (7.02 mg/g) and saponins. This result supported the medicinal use of the plant. (Aberoumand A., 2012)
12. B. Bhuvaneshwari et. al. studied on the hepatoprotective and anti-oxidant activity of the ethanolic extract of *Solanum indicum*. The results of their study strongly indicated that the hepatoprotective effect of the plant extract is possibly related to its marked anti-oxidant activity. (Bhuvaneshwari B., 2014)
13. P. K. Deb et. al. studied the anti-helminthic activity of *Solanum indicum*. Their study involved the determination of time of paralysis and time of death of the worms. Their study exhibited significant dose dependent activity of *Solanum indicum* extract. (Deb P. K., 2013)

### Materials and Methods

#### 3.1. Chemical study:

Generally the following methods are used throughout the experimental work-

- Collection and proper identification of the plant sample,
- Preparation of the plant material,
- Extraction,
- Solvent-solvent partitioning of the crude extract,
- Determination of total phenolics,
- Determination of total flavonoids,
- Determination of Cholinesterase inhibition,

##### 3.1.1. In-vitro studies:

- a. In- vitro antioxidant studies
- b. In- vitro acetyl cholinesterase inhibitory studies

##### 3.1.2. Material:

The fresh parts of the plant was selected for the chemical and biological investigations.

##### 3.1.3. Collection of Plant Materials:

Since the plant is parasitic, the whole plant was collected from Manikganj, a district of Bangladesh, in November, 2016 and identified by an expert taxonomist. A voucher specimen was submitted to the herbarium of the Department of Pharmacy, East West University.

##### 3.1.4: Preparation of Plant Material:

The collected barks were first washed with water to remove adhering dirt and then shade dried for several days with occasional sun drying. These were then dried in an oven for 24 hours at considerably low temperature for better grinding. The dried barks were ground into coarse powder by a grinding machine in the Department of Pharmacy, Rajshahi University.

##### 3.1.5. Cold extraction of the plant materials:

Powdered plant materials (barks) having a weight of about 1.6 kg were taken in an amber colored reagent bottle and soaked in 6.0 liter of methanol. The bottle with its contents were sealed and kept for a period of about 7 days with occasional shaking and stirring. The whole

In-vitro Assessment of Cholinesterase Inhibitory and Antioxidant Activity of *Solanum indicum* plant extracts

## Chapter 3: Materials and Methods

mixture was then filtered through cotton and then through Whatman No.1 filters paper and was concentrated with a rotary evaporator under reduced pressure at 50°C temperature to afford crude methanolic extract (CME).

### 3.1.6. Solvent-solvent partitioning of crude extract:

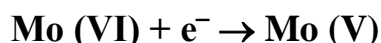
An aliquot (55.0 gm) of the concentrated methanolic extract was fractionated by modified Kupchan method and the resultant fractions that are Ethyl acetate, Methanol, N-Hexane and Aqueous fractions were obtained and used for the experiment purpose.

### 3.2: Determination of Total Phenolics:

Total phenolic content of the different extractives of *L. globosus* were determined employing the method as described by Singleton in 1965 involving Folin-Ciocalteu reagent as oxidizing agent and catechin as standard.

#### 3.2.1. Principle:

The content of total phenolic compounds of different fractions in the plant was determined by Folin–Ciocalteu Reagent (FCR). The FCR actually measures a sample's reducing capacity. The exact chemical nature of the FC reagent is not known, but it is believed to contain heteropolyphosphotungstates–molybdates. Sequences of reversible one or two-electron reduction reactions lead to blue species, possibly  $(\text{PMoW}_{11}\text{O}_{40})_4$ . In essence, it is believed that the molybdenum is easier to be reduced in the complex and electron-transfer reaction occurs between reductants and Mo (VI):



#### 3.2.2. Materials:

- Folin – ciocalteu reagent (Sigma chemical company, USA),
- Sodium carbonate (Sigma chemical company, USA),
- Methanol (Sigma chemical company, USA),
- Gallic acid (Wako pure chemicals Ltd., Japan),
- Micropipette (10-100 µl),
- Pipette (1-10 ml),
- UV-spectrophotometer (Shimadzu, USA).

#### 3.2.3. Experimental procedure:

The amount of total phenolics in extract was determined according to the Folin-ciocalteu procedure. Samples (500µl) were introduced into test tubes. 2.5mL of Folin-cio-calteu reagent and 2.5 ml of sodium carbonate (7.5%) were added. The tubes were mixed and allowed to stand for 30 min. Absorbance at 760 nm was measured. The total phenolic content was

In-vitro Assessment of Cholinesterase Inhibitory and Antioxidant Activity of *Solanum indicum* plant extracts

## Chapter 3: Materials and Methods

expressed as Gallic acid equivalents (GAE) in milligrams per gram extract as calculated from standard Gallic acid graph by the following formula.

$$C = (c \times V)/m$$

Where,

C = total content of phenolic compounds, mg/g plant extract, in GAE;

c = the concentration of gallic acid established from the calibration curve, mg/ml;

V = the volume of extract, ml;

m = the weight of different pure plant extracts, gm.

### 3.3. Determination of Total Flavonoids (TF):

Total flavonoid content of the different extractives of *L. globosus* was determined by aluminum chloride colorimetric method. Catechin was used as standard and the flavonoid content of the extractives was expressed as mg of catechin equivalent/gm of dried extract.

#### 3.3.1. Principle:

The content of total flavonoids in different extractives of plant extract was determined by the well-known aluminum chloride colorimetric method.<sup>[181]</sup> In this method aluminum chloride forms complex with hydroxyl groups of flavonoids present in the samples. This complex has the maximum absorbance at 510 nm.

#### 3.3.2. Materials:

- Aluminum Chloride (Sigma chemical company, USA)
- 5% NaNO<sub>2</sub>
- 1 mMN<sub>2</sub>NaOH
- Methanol (Sigma chemical company, USA)
- Catechin (Wako pure chemicals Ltd., Japan)
- Micropipette (10-100 µl)
- Pipette (1-10 ml)
- UV-spectrophotometer (Shimadzu, Japan)

#### 3.3.3. Experimental procedure:

Total flavonoid (TF) was determined using the procedure by Dewanto, Wu, Adom, and Liu, (2002). One milliliter of extract containing 0.1 g/mL of dry matter was placed in a 10 mL volumetric flask and then 5 mL of distilled water added followed by 0.3mL of 5% NaNO<sub>2</sub>. After 5 min, 0.6 mL of 10% AlCl<sub>3</sub> was added. After another 5 min 2 mL of 1M NaOH was added and volume made up with distilled water. The solution was mixed and absorbance

## Chapter 3: Materials and Methods

measured at 510 nm. TF amounts were expressed as catechin equivalents per dry matter. All samples were analyzed thrice and result averaged.

The total content of flavonoid compounds in plant extracts in catechinequivalents was calculated by the following formula equation

$$C = (c \times V)/m$$

Where,

C = total content of flavonoid compounds, mg/g plant extract, in catechin equivalent (GAE);

c = the concentration of catechin established from the calibration curve, mg/ml;

V = the volume of extract, ml;

m = the weight of pure plant extracts, gm.

### 3.4 DPPH (1, 1-diphenyl-2-picrylhydrazyl) Free Radical Scavenging Assay.

DPPH was used to evaluate the free radical scavenging activity of various fractions, isolated pure compounds and column subfractions.

#### Principle:

The 1, 1-diphenyl-2-picrylhydrazyl radical (DPPH) has been widely used to evaluate the free radical scavenging capacity of antioxidants. DPPH free radical is reduced to the corresponding hydrazine when it reacts with hydrogen donors. DPPH can make stable free radicals in aqueous or methanol solution. With this method it was possible to determine the antiradical power of an antioxidant activity by measurement of the decrease in the absorbance of DPPH at 517 nm. Resulting from a color change from purple to yellow the absorbance decreased when the DPPH was scavenged by an antioxidant, through donation of hydrogen to form a stable DPPH molecule. In the radical form this molecule had an absorbance at 517 nm which disappeared after acceptance of an electron or hydrogen radical from an antioxidant compound to become a stable diamagnetic molecule.

#### Materials:

- DPPH (Sigma chemical company, USA)
- Methanol (Sigma chemical company, USA)

In-vitro Assessment of Cholinesterase Inhibitory and Antioxidant Activity of *Solanum indicum* plant extracts



## Chapter 3: Materials and Methods

- Catechin
- Pipette (1-10 ml)
- UV spectrophotometer (Shimadzu, Japan)

### Experimental procedure:

The free radical scavenging activity of the extracts, different subcolumn fractions and isolated compounds of *L. globosus* was detected based on the method described by Braca et al. (2001, *J. Nat. Prod.*, 64, 892-895). Sample (2  $\mu$ l) will be added to 3ml of a 0.004% methanol solution of DPPH. Absorbance at 517 nm will be determined after 30 mins and the percentage inhibition activity was calculated from

$$I\% = [(A_0 - A_1)/A_0] \times 100,$$

Where,

I% is the percentage of scavenging activity

$A_0$  is the absorbance of the control, and

$A_1$  is the absorbance of the extract/standard.

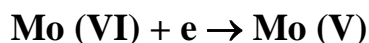
Then % inhibitions were plotted against concentration and from the graph  $IC_{50}$  was calculated.

### 3.5 Determination of Total Antioxidant Capacity:

Total antioxidant capacity of the different extractives, column subfractions and the isolated compounds of *L. globosus* was determined by the method of Prieto et al., (1999) with some modifications.<sup>[182]</sup>

#### Principle:

The phosphomolybdenum method usually detects antioxidants such as ascorbic acid, some phenolics,  $\alpha$ -tocopherol and carotenoids. The phosphomolybdenum method was based on the reduction of Mo (VI) to Mo (V) by the antioxidant compound and subsequent formation of a green phosphate/Mo (V) complex at acidic pH. In essence, it is believed that the molybdenum is easier to be reduced in the complex and electron-transfer reaction occurs between reductants and Mo (VI) and the formation of a green phosphate/Mo (V) complex with a maximal absorption at 695 nm.



### Materials

- Sulphuric acid (Merck, Germany)
- Sodium Phosphate (Sigma chemical company, USA)
- Ammonium Molybdate (Sigma chemical company, USA)
- Ascorbic acid (Analytical or Reagent grade)
- Methanol (Sigma chemical company, USA)
- Water bath
- Micropipette (100-1000  $\mu\text{l}$ )
- Pipette (1-10 ml)
- UV-spectrophotometer (Shimadzu, Japan)

### Experimental procedure:

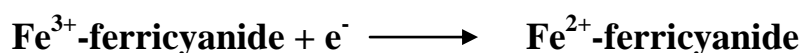
The sample (0.5 mL) was mixed with 3 mL of reagent solution (0.6 M sulphuric acid, 28 mM sodium phosphate and 4 mM ammonium molybdate). The tubes were incubated at 95<sup>o</sup>C for 90 min. The mixture was cooled to room temperature, then the absorbance of the solution was measured at 695 nm against blank. A typical blank solution contained 3 mL of reaction mixture and the same volume of solvent used for the sample, and it is incubated under the same conditions as the rest of the sample solution. The total antioxidant activity was expressed as compared with ascorbic acid.

### 3.6 Reducing Power Capacity Assessment:

The reducing power of the different extractives, compounds and column subfractions of *L. globosus* was evaluated by the method of Oyaizu (1986).

#### Principle:

In this assay, the yellow color of the test solution changes to various shades of green and blue depending on the reducing power of antioxidant samples. The reducing capacity of a compound may serve as a significant indicator of its potential antioxidant activity. The presence of reductants such as antioxidant substances in the samples causes the reduction of the Fe<sup>3+</sup>-ferricyanide complex to the ferrous form by donating an electron. The amount of Fe<sup>2+</sup> complex can then be monitored by measuring the formation of Perl's Prussian blue at 700 nm.



### Materials:

- ✚ Potassium ferricyanide (Merck, Germany)
- ✚ Trichloro Acetic acid (Merck, Germany)
- ✚ Ferric Chloride (Sigma chemical company, USA)
- ✚ Phosphate buffer (Sigma-Aldrich, USA)
- ✚ Ascorbic acid (Sigma chemical company, USA)
- ✚ Water bath
- ✚ Centrifuge machine
- ✚ Pipette (1-10 ml)
- ✚ UV spectrophotometer (Shimadzu, USA)

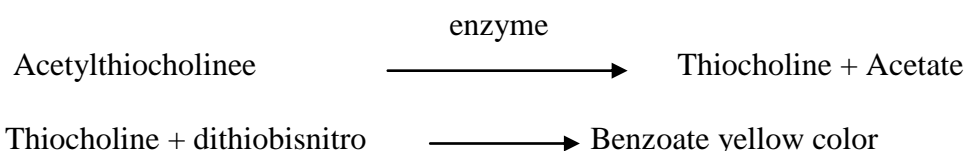
### Experimental Procedure:

Reducing power was investigated using the method developed by Oyaizu (1986). A 2.5 mL fraction of *L. globosus* was mixed with 2.5 mL of phosphate buffer (200mM, pH 6.6) and 2.5 mL 1% potassium ferricyanide. The mixture was placed in a water bath for 20 min at 50°C. The resulting solution was cooled rapidly, mixed with 2.5 mL of 10% trichloroacetic acid and centrifuged at 3,000 rpm for 10 min. A 5.0 mL fraction from the supernatant was mixed with 5mL of distilled water and 1mL of ferric chloride. Absorbance of the resultant mixture was measured at 700 nm after 10 min. The higher the absorbance value the stronger the reducing power.

### 3.7 In-Vitro Acetyl Cholinesterase Inhibitory Studies:

#### Principle:

The acetylcholinesterase inhibitory activity of different extractives, column subfractions and isolated compounds of *L. globosus* was determined by Ellman's method (Ellman et al., 1961). This method estimates AchE using acetylcholine iodide (substrate) and dithiobisnitro benzoic acid (DTNB). The enzymatic activity was measured by the yellow color compound produced by thiocholine when it reacts with dithiobisnitro benzoate ion.



The color intensity can be measured on a spectrophotometer and the enzyme activity expressed as the rate of reaction per minute.

## Chapter 3: Materials and Methods

### Materials:

- 5, 5'-dithio-bis-(2-nitro) benzoic acid (DTNB) (Sigma-Aldrich, Japan)
- Acetylthiocholine iodide (Sigma-Aldrich, Japan)
- Rat brain homogenate (Crude enzyme)
- Tris-Hcl buffer (Merck, Germany)
- Triton X-100 (Sigma chemical company, USA)
- BCA kit (bicinchoninic acid; Sigma Co., USA)
- Bovine serum albumin (Merck, India)
- Donepezil (Sigma-Aldrich, Japan)
- Micropipette (100-1000  $\mu$ l)
- UV spectrophotometer (Shimadzu, USA)

### Experimental Procedure:

The acetylcholinesterase (AChE) inhibitory assay was performed according to the colorimetric method of Ellman using acetylthiocholine iodide as a substrate. For the enzyme source, the rat brains were homogenized in a homogenizer with 5 volumes of a homogenation buffer [10 mM Tris-HCl (pH 7.2), which contained 1 M NaCl, 50 mM MgCl<sub>2</sub> and 1% Triton X-100] and centrifuged at 10,000 rpm for 30 min. The resulting supernatant was used as an enzyme source. All of the extraction steps were carried out at 4°C. Protein concentration was determined using the BCA kit (bicinchoninic acid; Sigma Co., USA) with bovine serum albumin (BSA) as a protein standard. The rates of hydrolysis by acetylcholinesterase were monitored spectrophotometrically. Each sample or standard (500  $\mu$ l) was mixed with an enzyme solution (500  $\mu$ l) and incubated at 37°C for 15 min. Absorbance at 405 nm was read immediately after adding an Ellman's reaction mixture [3.5 ml; 0.5 mM acetylthiocholine, 1 mM 5, 5'-dithio-bis (2-nitro benzoic acid)] in a 50 mM sodium phosphate buffer (pH 8.0) to the above reaction mixture. Reading was repeated for 10 min at 2 min intervals to verify that the reaction occurred linearly. The blank reaction was measured by substituting saline for the enzyme.

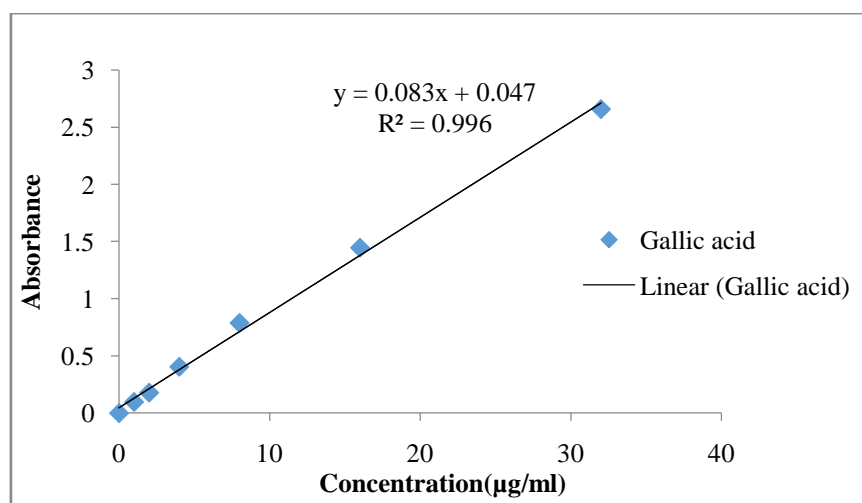
#### 4.1 Determination of Total Phenolics

Phenolic content of the crude methanolic extract, ethyl acetate, aqueous and n-hexane fraction were determined using Folin-Ciocalteu reagent. Phenolic content of the samples were calculated on the basis of the standard curve for gallic acid as shown in Table 3.2 and in figure 3.1. The results were expressed as mg of gallic acid equivalent (GAE)/gm of dried extractives.

**Table 4.1: Absorbance of gallic acid at different concentrations after treatment with FCR.**

Concentration ( $\mu\text{g/ml}$ )	Absorbance			Mean $\pm$ STD
	A	b	c	
1	0.098	0.103	0.096	0.099 $\pm$ 0.003606
2	0.176	0.179	0.182	0.179 $\pm$ 0.003
4	0.403	0.411	0.401	0.405 $\pm$ 0.005292
8	0.785	0.789	0.792	0.789 $\pm$ 0.003512
16	1.452	1.456	1.432	1.447 $\pm$ 0.012858
32	2.654	2.664	2.659	2.659 $\pm$ 0.005

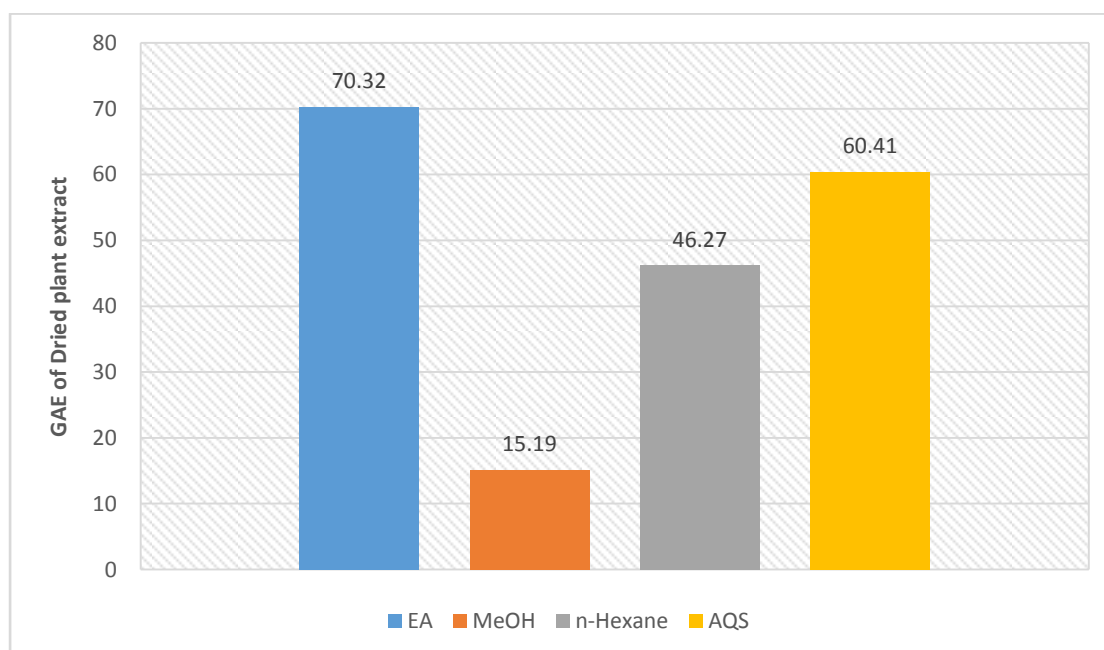
Table1:



**Figure 4.1: Standard curve of gallic acid for the determination of total phenolics.**

**Table 4.2: Determination of total phenolic content**

Fraction of the Plant Material	Concentration( $\mu\text{g}/\mu\text{l}$ )	Absorbance	GAE/gm of dried sample
Ethly Acetate	100	1.058	70.32
MeOH	100	0.213	15.19
n-Hexane	100	0.647	46.27
Aqueous	100	0.936	60.41

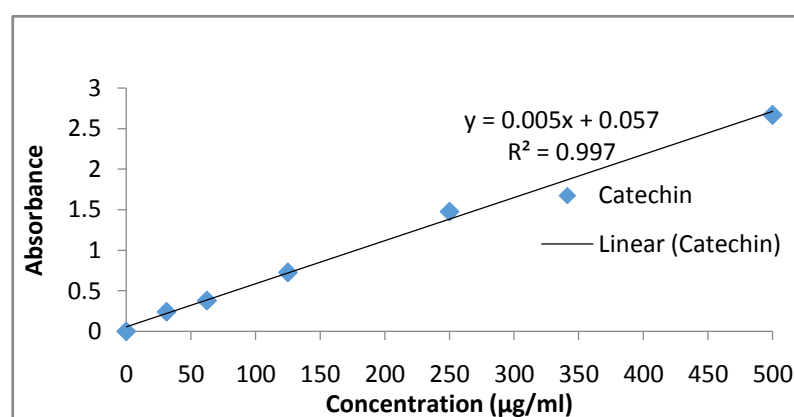
**Figure 4.2: Total phenolic content (mg/gm plant extract in gallic acid equivalent)**

## 4.2 Determination of Total Flavonoids

Total flavonoids content of crude methanol extract (CME), ethyl acetate, aqueous and n-hexane fractions were determined using much known aluminum chloride colorimetric method. Flavonoid content of the samples was calculated on the basis of the standard curve for catechin as shown in Table and in Fig. The results were expressed as mg of catechin equivalent (CE)/gm of dried sample.

**Table 4.3: Absorbance of catechin at different concentrations for quantitative determination of total flavonoids**

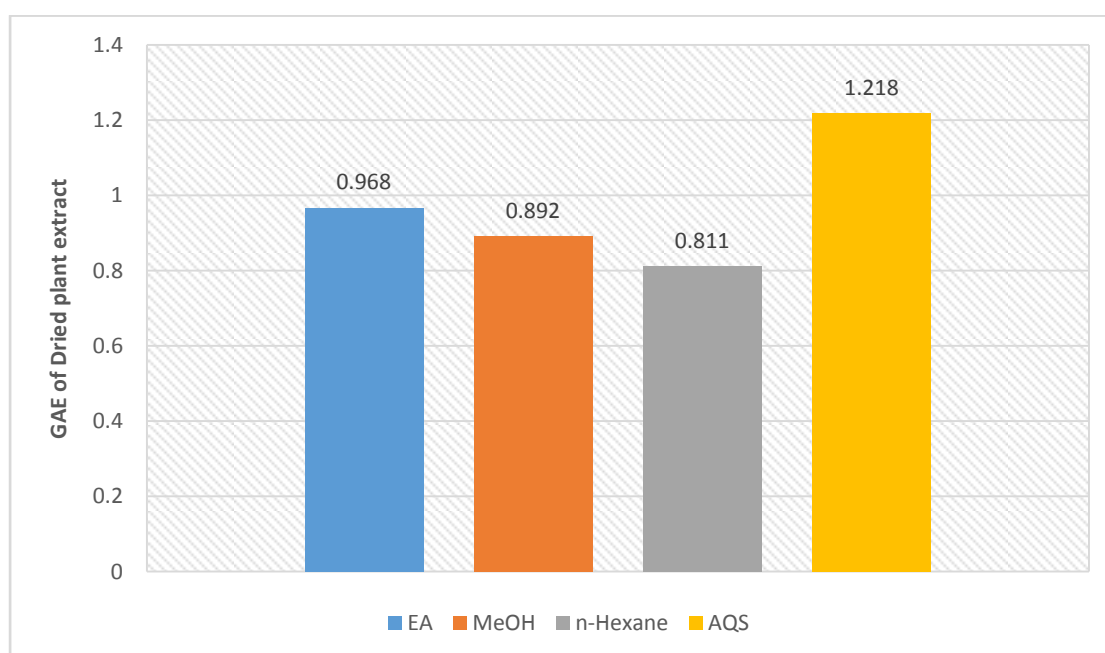
Concentration ( $\mu\text{g/ml}$ )	Absorbance			Absorbance Mean $\pm$ STD
	a	b	c	
31.25	0.241	0.238	0.244	$0.241 \pm 0.003$
62.5	0.380	0.378	0.382	$0.38 \pm 0.002$
125	0.726	0.720	0.732	$0.726 \pm 0.006$
250	1.476	1.472	1.480	$1.476 \pm 0.004$
500	2.667	2.657	2.677	$2.667 \pm 0.007$



**Figure 4.3: Standard curve of catechin for the determination of total flavonoids**

**Table 4.4: Determination of total flavonoid content**

Fraction of the Plant Material	Concentration ( $\mu\text{g}/\mu\text{l}$ )	Absorbance	CE/gm of dried sample
Ethly Acetate	100	0.122	0.968
MeOH	100	0.114	0.892
n-Hexane	100	0.100	0.811
Aqueous	100	0.148	1.218



**Figure 4.4: Total flavonoid content (mg/gm plant extract in catechin equivalent) of CME, PET, CLF**



### 4.3 DPPH Radical Scavenging Activity

The model of scavenging the stable DPPH radical is a widely used method to evaluate the free radical scavenging ability of various samples including plant extracts. DPPH antioxidant assay is based on the ability of 1, 1-diphenyl-2-picryl-hydrazyl (DPPH), a stable free radical, to decolorize in the presence of antioxidants. The DPPH radical contains an odd electron, which is responsible for the absorbance at 517 nm and also for a visible deep purple color. When DPPH accepts an electron donated by an antioxidant compound, the DPPH is decolorized, which can be quantitatively measured from the change in absorbance and % of scavenging activity is calculated.

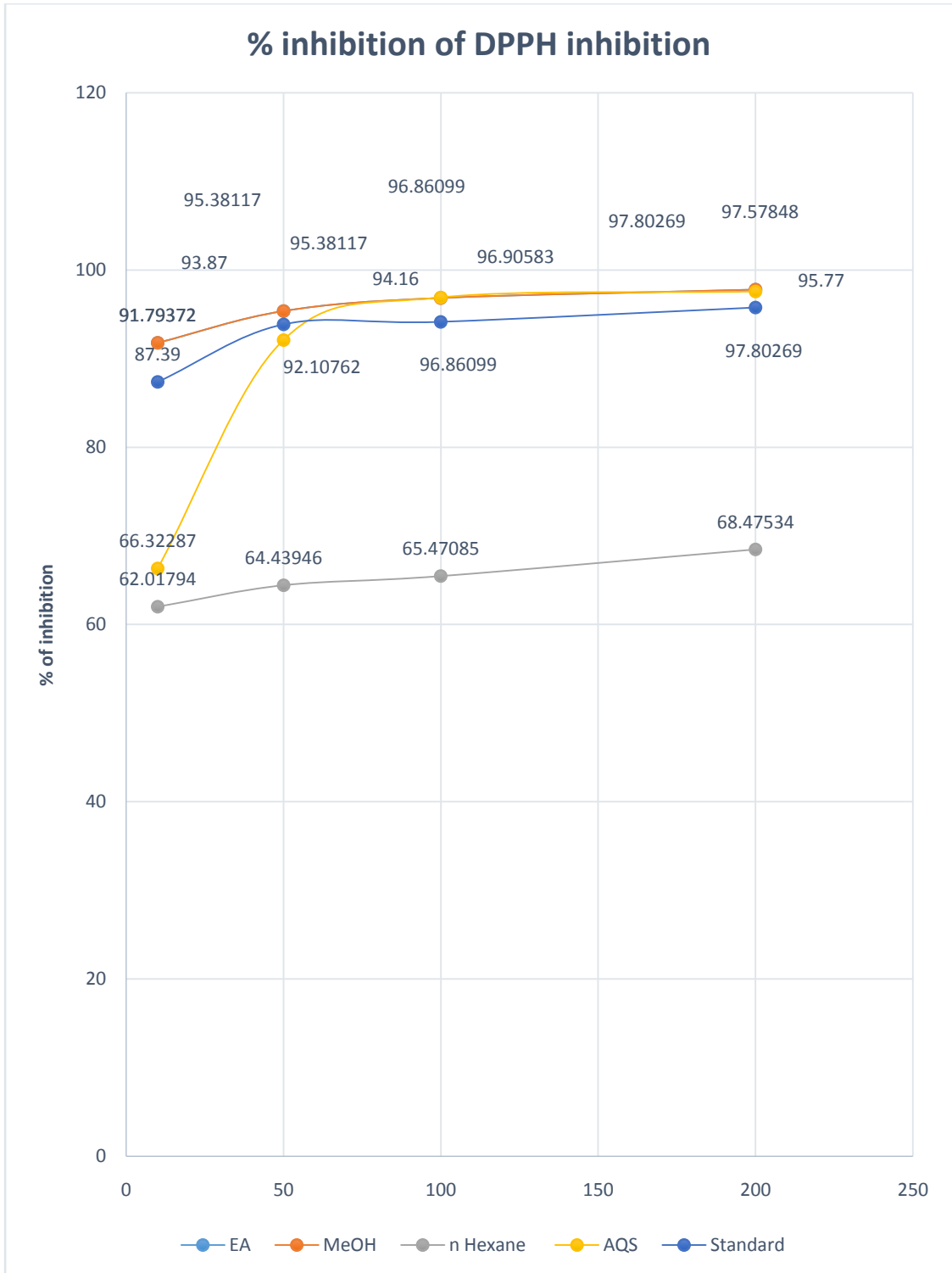
**Table 4.7: % of inhibition of different parts of the plant**

Name of the Sample	Concentration ( $\mu\text{g}/\mu\text{l}$ )	Absorbance	% of Inhibition
Ethyl Acetate	10	0.058	97.3991
	50	0.049	97.80269
	100	0.038	98.29596
	200	0.016	99.28251
MeOH	10	0.183	91.79372
	50	0.103	95.38117
	100	0.070	96.86099
	200	0.049	97.80269
n-Hexane	10	0.847	62.01794
	50	0.793	64.43946
	100	0.770	65.47085
	200	0.703	68.47534

---

## Chapter 4: Results

Aqueous	10	0.751	66.32287
	50	0.176	92.10762
	100	0.069	96.90583
	200	0.054	97.57848
Aqueous	10	0.19	87.39
	50	0.14	93.87
	100	0.11	94.16
	200	0.09	95.77



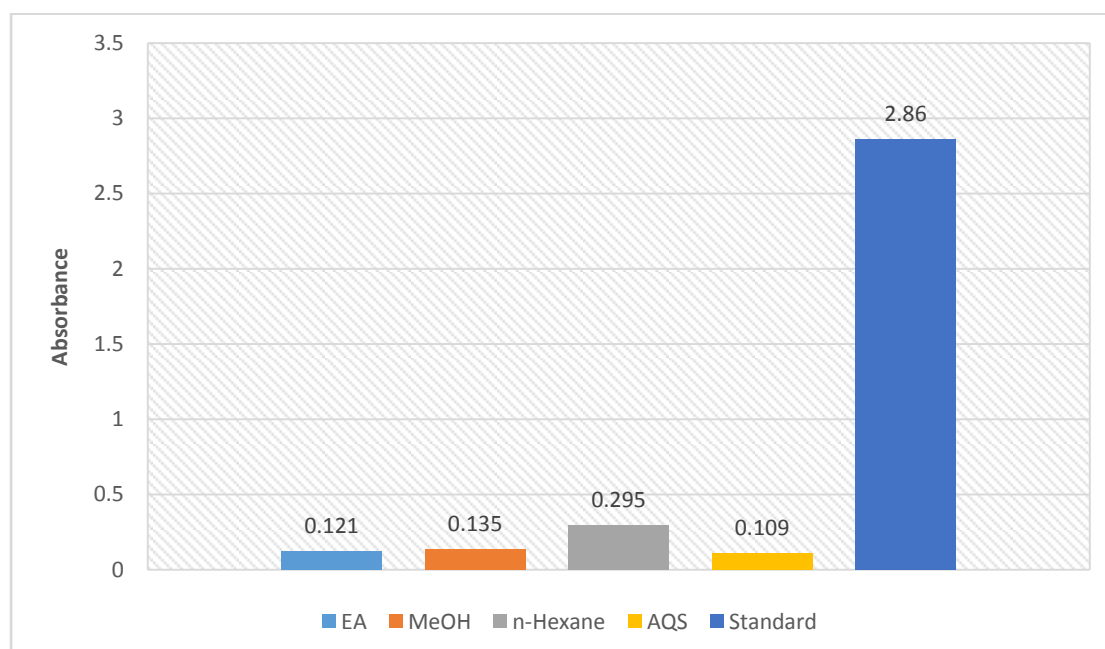
**Figure 4.5: % of inhibition of different parts of plants by DPPH radical scavenging activity**

#### 4.4 Reducing Power Capacity

Cfractions was determined by the method of Oyaizu (1986) with slight modification. The reductive capabilities of crude methanol extract (CME) and its four fractions and the reference standard catechin are shown in Table.

**Table 4.8: Chart of absorbance for reducing power capacity**

Name of the Sample	Concentration ( $\mu\text{g}/\mu\text{l}$ )	Absorbance
Ethyl Acetate	300	0.121
MeOH	300	0.135
n-Hexane	300	0.295
Aqueous	300	0.109
<i>Catechin</i>	300	2.860



**Figure4.6: Reducing power capacity of CME extract**

### 4.5 Acetyl cholinesterase inhibitory activity assay

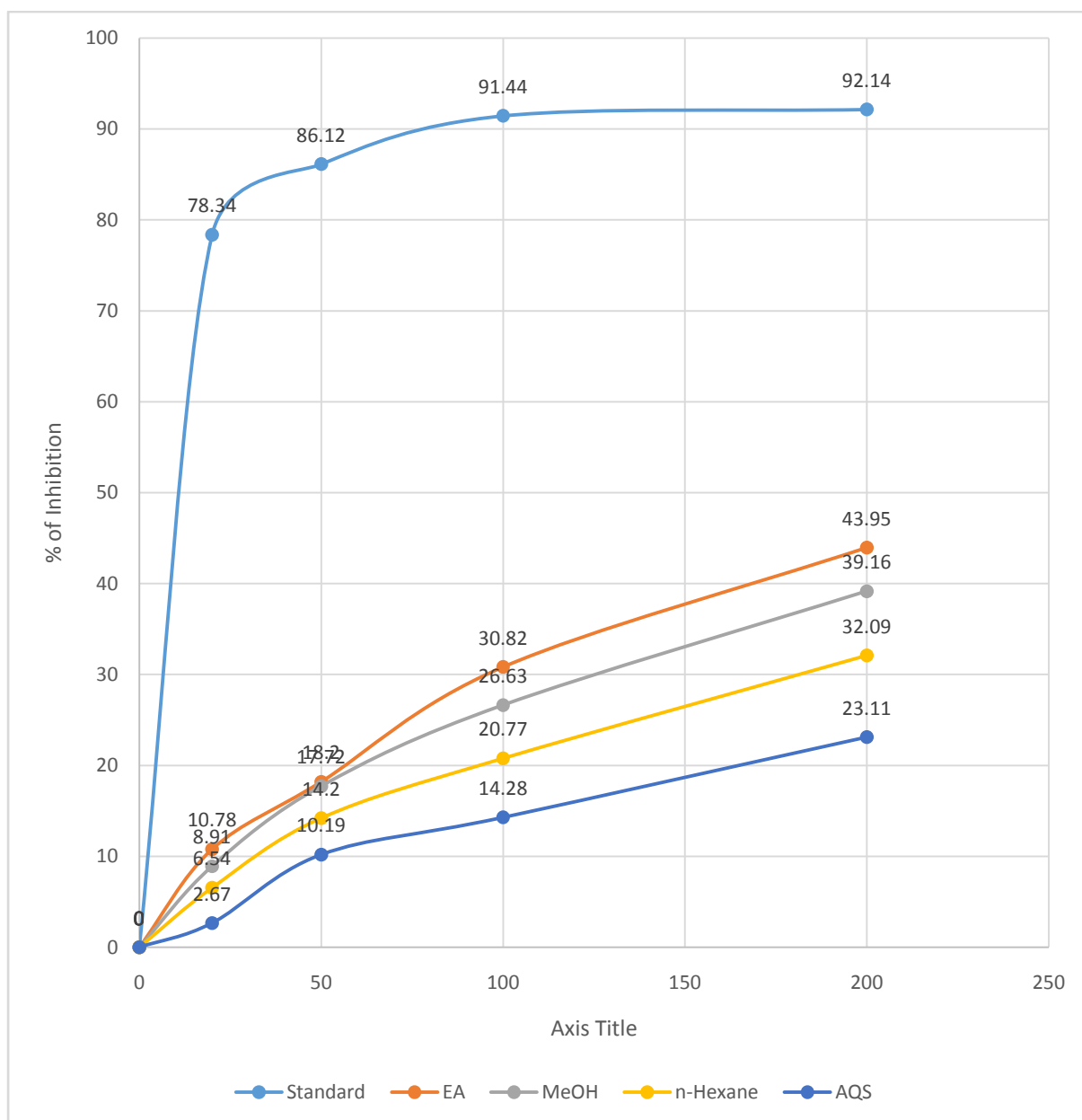
Inhibition of acetylcholinesterase, which enhances cholinergic transmission by reducing the enzymatic degradation of acetylcholine, is a widely accepted strategy for the development of AD drug. In this study, the acetylcholinesterase inhibitory activity of the crude methanol extract was assessed by modified Ellman's method and compared with the reference standard donepezil. This method estimates acetylcholinesterase (AChE) using acetylcholine iodide (substrate) and dithiobisnitro benzoic acid (DTNB). The enzymatic activity was measured by the yellow color compound produced by thiocholine when it reacts with dithiobisnitro benzoate ion.

**Table 4.9: % of inhibition for acetylcholinesterase inhibitory activity assay**

Name of sample	Conc. ( $\mu\text{g/ml}$ )	% of inhibition Mean
Donepezil (Std)	20	78.34
	50	86.12
	100	91.44
	200	92.14
Ethyl Acetate	20	10.78
	50	18.20
	100	30.82
	200	43.95
MeOH	20	8.91
	50	17.72
	100	26.63
	200	39.16
n-Hexane	20	6.54
	50	14.20
	100	20.77
	200	32.09

## Chapter 4: Results

AQS	20	2.67
	50	10.19
	100	14.28
	200	23.11

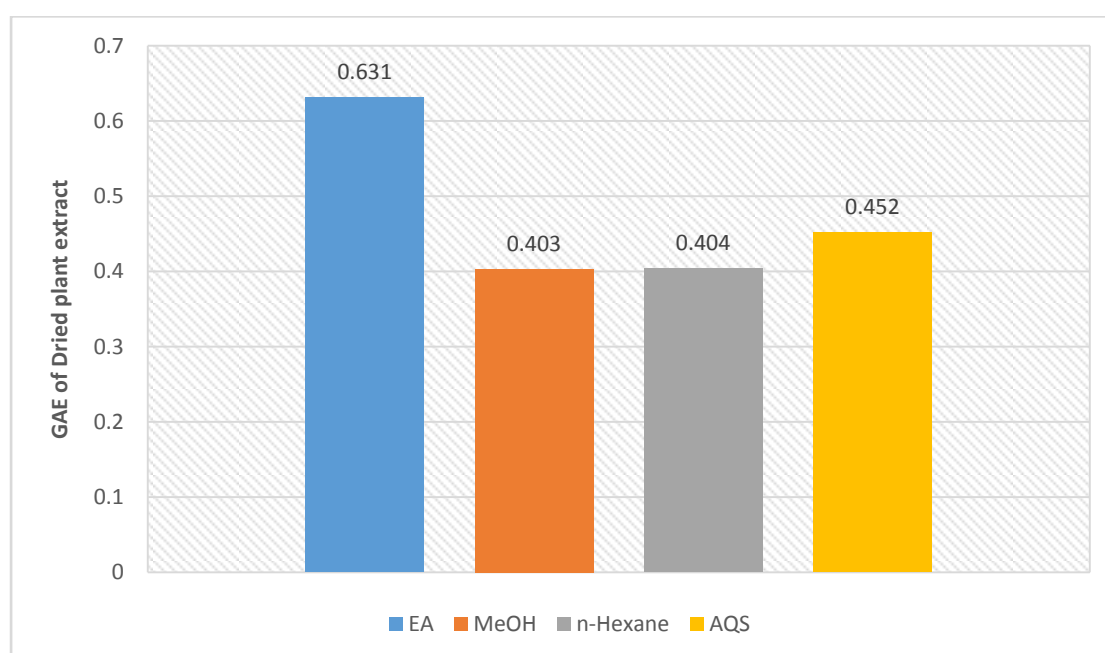


**Figure 4.7: % of inhibition for acetylcholinesterase inhibitory activity assay**

### 4.6 Total Antioxidant Determination

Total antioxidant capacity of the different extractives, column subfractions and the isolated compounds of the plant was determined by the method of Prieto et al., (1999) with some modifications.

Name of the Sample	Concentration ( $\mu\text{g}/\mu\text{l}$ )	Absorbance
Ethly Acetate	100	0.631
MeOH	100	0.403
n-Hexane	100	0.404
Aqueous	100	0.452



**Figure 4.8: Total Antioxidant content of the plant fractions**

### Discussion

#### 5.1 Determination of Total Phenolics:

Phenolic content of a plant help to find out the antioxidant properties of a plant. The Total Phenolic content of the crude extract of *the plant* can be determined by using Folin-Ciocalteu reagent. The crude methanolic extract is further sub fractioned by liquid liquid extraction. From the table of the result, we can see the ethyl acetate fraction of the plant contain the largest quantity of the phenols compare to other fractions. Units were used as GAE/gm of the dried sample. EA portion contain 70.32 GAE/gm of the dried sample whereas other fractions like MeOH, n-Hexane, Aqueous Fraction contain 15.19, 46.27 and 60.41 GAE/gm of the dried sample respectively.

#### 5.2 Determination of Total Flavonoids:

**Flavonoids** are a group of **plant** metabolites thought to provide health benefits through cell signalling pathways and antioxidant effects. **Flavonoids** are abundant in **plants**, in which they perform several **functions**. They are essential pigments for producing the colors needed to attract pollinating insects. Total flavonoids content were calculated by using aluminum chloride colorimetric method. The crude methanolic extract, ethyl acetate, aqueous and n-hexane fraction were tested. From the table of the result, we can see the aqueous fraction of the plant contain the largest quantity of the phenols compare to other fractions. Units were used as Catechin Equivalent/gm of the dried sample. Aqueous Fraction contain 1.218 CE/gm of the dried sample whereas other fractions like EA portion, MeOH, n-Hexane, contain 0.968, 0.892 and 0.811 CE/gm of the dried sample respectively. From the above result it can be said that, this plant is not so much rich in containing flavonoids.

#### 5.3 DPPH Radical Scavenging Activity:

An unavoidable consequence of aerobic metabolism is production of **reactive oxygen species** (ROS). ROS include free radicals such as **superoxide anion** ( $O_2^-$ ), hydroxyl radical ( $\cdot OH$ ), as well as non-radical molecules like hydrogen peroxide ( $H_2O_2$ ), singlet **oxygen** ( $^1O_2$ ), and so forth. To find free radical scavenging activity DPPH free radical scavenging activity was done. The evaluation of free radical scavenging activities is done by using 1,1-diphenyl-2-picrylhydrazyl radical (DPPH). Almost all the fraction are found active against DPPH free radical. But EA and MeOH found most active as at concentration 50  $\mu g/\mu l$ , it can scavenge 97.80 % and 95.38% free radicals. Other fraction also found active in this test.



### 5.4 Reducing Power Capacity:

A **reducing agent** loses electrons and is oxidized in a chemical reaction. A **reducing agent** is oxidized, because it loses electrons in the redox reaction. Most of the plants contain an ample of free radical scavenging molecules such as phenolic compounds, nitrogen compounds, vitamins, reducing sugar, terpenoids and some other metabolites that are rich in antioxidant activity. All of the plants used to synthesize nanoparticles are known to be rich in polyols and antioxidant. Hydroxyl and carboxylic groups present may act as reducing agent and stabilizing agents in the synthesis of nanoparticles. The assessment of reducing power capacity was done by the method of Oyaizu (1986). This plant gives a little reducing power in the test. Among all the fraction n-Hexane found most promising with absorbance 0.295 while other contain almost half of it like MeOH, Aqueous and EA fraction contain 0.109, 0.135 and 0.121 respectively. The activity of the sample plants are not that much promising.

### 5.5 Acetyl cholinesterase inhibitory activity assay:

An acetylcholinesterase inhibitor or anti-cholinesterase is a chemical or a drug that inhibits the acetylcholinesterase enzyme from breaking down acetylcholine, thereby increasing both the level and concentration in the effector part of the body. The evaluation of acetylcholinesterase inhibitory activity is done by Ellman's method and compared with the reference standard donepezil. Table of Acetylcholinesterase inhibitory activity represents that *the plant* shows moderate inhibition as the increase of extract concentration. Among all fractions EA found most efficient as it inhibit nearly 44% of AChE at concentration 200 µg/ml, while rest of the fraction inhibits moderately. Donepezil was used as a standard acetylcholinesterase inhibitor.

### 5.6 Total Antioxidant Determination:

An **antioxidant** is a molecule that inhibits the oxidation of other molecules. Oxidation is a chemical reaction that can produce free radicals. Antioxidant can inhibit these molecules by preventing them in various way and ensure healthy cell. Total antioxidant capacity of the different extractives, column subfractions and the isolated compounds of the plant was determined by the method of Prieto et al., (1999) with some modifications. Among all the fractions EA contain most antioxidant, as at concentration of 100 µg/µl it give an absorbance of 0.631. Rest of the fraction contain almost similar amount of antioxidant as they give an absorbance of 0.403, 0.404, 0.452 for MeOH, n-Hexane, Aqueous fraction respectively at same concentration.

## Chapter 5: Discussion and Conclusion

### **Conclusion**

The plant is found moderate active in inhibiting acetylcholinesterase enzyme. Its total phenolic content, total antioxidant capability and free radical scavenging capability is also very high for this plant. But this plant lacks in containing flavonoids. As it is only crude methyl extract of the plant, so further research is need to find out the most effective molecule from the mixture of molecule that is biologically active.

## Chapter 6: References

### References:

Aberoumand, A., 2012. Assay of Nutritional Potential of the Fruits of *Solanum indicum* L. in Iran. *Journal of Agricultural Technology*, 8(3), pp.923-929.

Alz.org.2016. Alzheimer's Disease & Dementia | Alzheimer's Association. [online] Available at: [http://www.alz.org/alzheimers\\_disease\\_what\\_is\\_alzheimers.asp](http://www.alz.org/alzheimers_disease_what_is_alzheimers.asp) [Accessed 02 June. 2017]

Bahgat, A., Abdel-Aziz, H., Raafat, M., Mahdy, A., El-Khatib, A.S., Ismail, A. and Khayyal, M.T., 2008. *Solanum indicum* ssp. *distichum* extract is effective against l-NAME-induced hypertension in rats. *Fundamental & clinical pharmacology*, 22(6), pp.693-699.

Bhuvanewari, B., Manimegalai, M. and Suguna, L., 2015. Hepatoprotective and Antioxidant Activities of *Solanum indicum* Linn Berries. *International journal of clinical toxicology*, 2(2), pp.71-76.

Biswas, A., Bari, M.A., Roy, M. and Bhadra, S.K., 2010. Inherited folk pharmaceutical knowledge of tribal people in the Chittagong hill tracts, Bangladesh.

Brahma, S., Narzary, H. and Basumatary, S., 2013. Wild edible fruits of kokrajhar district of assam, north-east india. *Asian Journal of Plant Science and Research*, 3(6), pp.95-100.

Chauhan, N., Kumar, D. and Kasana, M.S., 2009. Medicinal plants of Muzaffarnagar district used in treatment of urinary tract and kidney stones.

Chiang, H.C., Tseng, T.H., Wang, C.J., Chen, C.F. and Kan, W.S., 1990. Experimental antitumor agents from *Solanum indicum* L. *Anticancer research*, 11(5), pp.1911-1917.

In-vitro Assessment of Cholinesterase Inhibitory, Antioxidant and Thrombolytic Activity of *Solanum indicum* plant extracts

## Chapter 6: References

Deb, P.K., Das, N., Ghosh, R. and Bhakta, T., 2013. Evaluation of in vitro anti-oxidant and anthelmintic activity of Solanum indicum Linn. Berries. *Indo American Journal of Pharmaceutical Research*, 3(5), pp.4123-4130.

Dubois, B., Feldman, H.H., Jacova, C., Cummings, J.L., Dekosky, S.T., Barberger-Gateau, P., Delacourte, A., Frisoni, G., Fox, N.C., Galasko, D. and Gauthier, S., 2010. Revising the definition of Alzheimer's disease: a new lexicon. *The Lancet Neurology*, 9(11), pp.1118-1127.

Deb, P.K., Ghosh, R., Chakraverty, R., Debnath, R., Das, L. and Bhakta, T., 2014. Phytochemical and Pharmacological Evaluation of Fruits of Solanum indicum Linn. *Int. J. Pharm. Sci. Rev. Res.*, 25(2), pp.28-32.

Gavimath, C.C., Kulkarni, S.M., Raorane, C.J., Kalsekar, D.P., Gavade, B.G., Ravishankar, B.E. and Hooli, R.S., 2012. Antibacterial potentials of Solanum indicum, Solanum xanthocarpum and Physalis minima. *Int J Pharma Appl*, 3, pp.414-8.

Google Books., 2017. *Solanum Genetics, Breeding and Biotechnology*. [online] Available at: <http://books.google.com.bd/books>

Guiama, V.D., Libouga, D.G., Ngah, E. and Mbofung, C.M., 2010. Milk-clotting activity of berries extracts from nine Solanum plants. *African Journal of Biotechnology*, 9(25), pp.3911-3918.

Hasan, R.U., Prabhat, P., Shafaat, K. and Khan, R., 2013. Phytochemical investigation and evaluation of antioxidant activity of fruit of Solanum Indicum Linn. *International Journal of Pharmacy and Pharmaceutical Sciences*, 5(3), pp.237-242.

## Chapter 6: References

Huang, W.H., Hsu, C.W. and Fang, J.T., 2008. Central diabetes insipidus following digestion Solanum indicum L. concentrated solution. *Clinical Toxicology*, 46(4), pp.293-296.

Jivad, N. and Rabiei, Z., 2014. A review study on medicinal plants used in the treatment of learning and memory impairments. *Asian Pacific Journal of Tropical Biomedicine*, 4(10), pp.780-789.

Kotoky, J., Sharma, K.K., Kalita, J.C. and Barthakur, R., 2012. Antidermatophytic activity of Solanum indicum L. from North East India. *Journal of Pharmacy Research Vol*, 5(1), pp.265-267.

Kouadio, I.A., Chatigre, O.K. and Dosso, M.B., 2014. Phytochemical screening of the antimicrobial fraction of Solanum indicum L. berries extract and evaluation of its effect against the survival of bacteria pathogens of plants. *International Journal of Biotechnology and Food Science*, 2(1), pp.16-20.

Krishnappa, D.G. and Chennaveeraiah, M.S., 1975. Cytotaxonomy of Solanum indicum complex. *Cytologia*, 40(2), pp.323-331.

Krishnaraju, A.V., Rao, T.V., Sundararaju, D., Vanisree, M., Tsay, H.S. and Subbaraju, G.V., 2006. Biological screening of medicinal plants collected from Eastern Ghats of India using Artemia salina (brine shrimp test). *Int. J. Appl. Sci. Eng*, 4(2), pp.115-125.

Kumar, V.P., Chauhan, N.S., Padh, H. and Rajani, M., 2006. Search for antibacterial and antifungal agents from selected Indian medicinal plants. *Journal of ethnopharmacology*, 107(2), pp.182-188.

Madaan, A., Kanjilal, S., Gupta, A., Sastry, J.L.N., Verma, R., Singh, A.T. and Jaggi, M., 2015. Evaluation of immunostimulatory activity of Chyawanprash using in vitro assays.

## Chapter 6: References

- Mollik, M.A.H., Hossan, M.S., Paul, A.K., Taufiq-Ur-Rahman, M., Jahan, R. and Rahmatullah, M., 2010. A comparative analysis of medicinal plants used by folk medicinal healers in three districts of Bangladesh and inquiry as to mode of selection of medicinal plants. *Ethnobotany Research and Applications*, 8, pp.195-218.
- Narayanaswamy, N. and Balakrishnan, K.P., 2011. Evaluation of some medicinal plants for their antioxidant properties. *International Journal of Pharm Tech Research*, 3(1), pp.381-385.
- N'Dri, D., Calani, L., Mazzeo, T., Scazzina, F., Rinaldi, M., Del Rio, D., Pellegrini, N. and Brighenti, F., 2010. Effects of different maturity stages on antioxidant content of Ivorian Gnagnan (*Solanum indicum* L.) berries. *Molecules*, 15(10), pp.7125-7138.
- Obute, G.C., Ndukwu, B.C. and Okoli, B.E., 2006. Cytogenetic studies on some Nigerian species of *Solanum* L.(Solanaceae). *African Journal of Biotechnology*, 5(13).
- Parle, M. and Bansal, N., 2006. Traditional medicinal formulation, Chyawanprash—a review.
- Panda, H., 2002. *Medicinal plants cultivation & their uses*. ASIA PACIFIC BUSINESS PRESS Inc..
- Rahmatullah, M., Das, A.K., Mollik, M.A.H., Jahan, R., Khan, M., Rahman, T. and Chowdhury, M.H., 2009. An ethnomedicinal survey of Dhamrai sub-district in Dhaka district, Bangladesh. *American Eurasian Journal of Sustainable Agriculture*, 3(4), pp.881-888.
- Rajasekaran, S., 1970. Cytology of the hybrid *Solanum indicum* L. × *S. melongena* var. *insanum* Prain. *Current Science*, 39.
- In-vitro Assessment of Cholinesterase Inhibitory, Antioxidant and Thrombolytic Activity of *Solanum indicum* plant extracts

## Chapter 6: References

Ray, P.G. and Majumdar, S.K., 1976. Antimicrobial activity of some Indian plants. *Economic Botany*, 30(4), p.317.

Revathi, P. and Parimelazhagan, T., 2010. Traditional knowledge on medicinal plants used by the Irula tribe of Hasanur hills, Erode District, Tamil Nadu, India. *Ethnobotanical Leaflets*, 2010(2), p.4.

Smit, H.F., Woerdenbag, H.J., Singh, R.H., Meulenbeld, G.J., Labadie, R.P. and Zwaving, J.H., 1995. Āyurvedic herbal drugs with possible cytostatic activity. *Journal of ethnopharmacology*, 47(2), pp.75-84.

Syu, W.J., Don, M.J., Lee, G.H. and Sun, C.M., 2001. Cytotoxic and novel compounds from *Solanum indicum*. *Journal of natural products*, 64(9), pp.1232-1233.

Zamilpa, A., Tortoriello, J., Navarro, V., Delgado, G. and Alvarez, L., 2002. Five New Steroidal Saponins from *Solanum c hrysotrichum* Leaves and Their Antimycotic Activity. *Journal of natural products*, 65(12), pp.1815-1819.